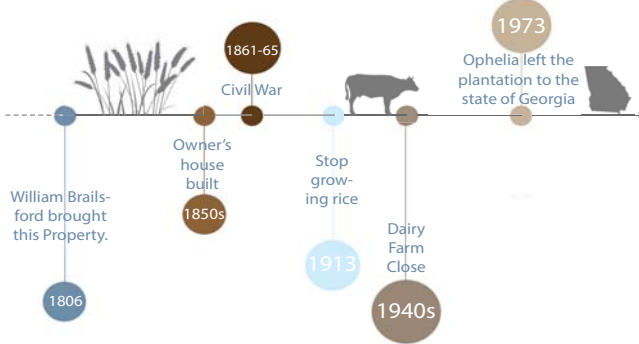


William Brailsford



Objectives:

Renovation

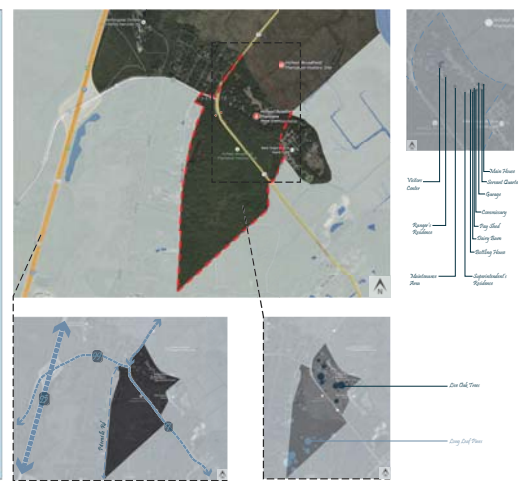
Proposed Visitor center includes projection room on the second floor, Enlarged gift shop, Collection room/museum, outdoor seating and open space for

Safety

Fencing, ramp with grading less than 3%, railing, signs/warning board, non-toxic plants, low level lighting, few night lights are added to the site for the concern of the users.

Educational

Volunteers on site help with giving tour/lectures about the site to the visitors. New visitor center provides projection room for short film and receptions for researchers to do on site survey on SE portion of the plantation. Focus on creating an animal habitat for local species like egrets etc.



Self-sustainability

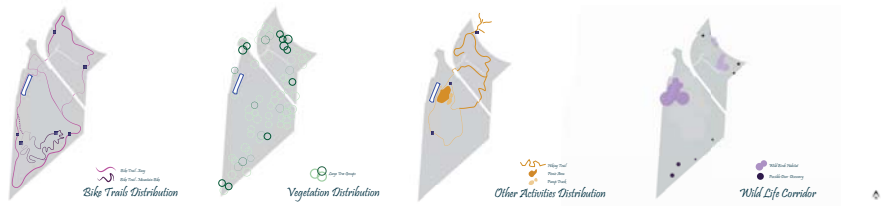
Rain water reuse system, gray water infiltration programing, bio-digester can be considered to be put into use while vegetable gardens are built for partial food supply for the new restaurant in the visitor center.

Aesthetically delightful

Variety of local planting plants and transplanted old garden plants are installed in a new memorial garden. Pedestrian bridges take visitors to the other side of borrow pit, transform the borrow pit into a pond with entertainment purpose. For example, camping with low potential fire hazards and kids pump track biking etc.

Semi-commercial

Certain amount of lodging and volunteer lodging are provided on site. Revenue of tourism is used for renovation and conservation. Scattered camping areas along the borrow pit are introduced by the new hiking trails. Bike trails with two difficulties attracts local younger publics and kayaking routes are developed at the NE marshy area.

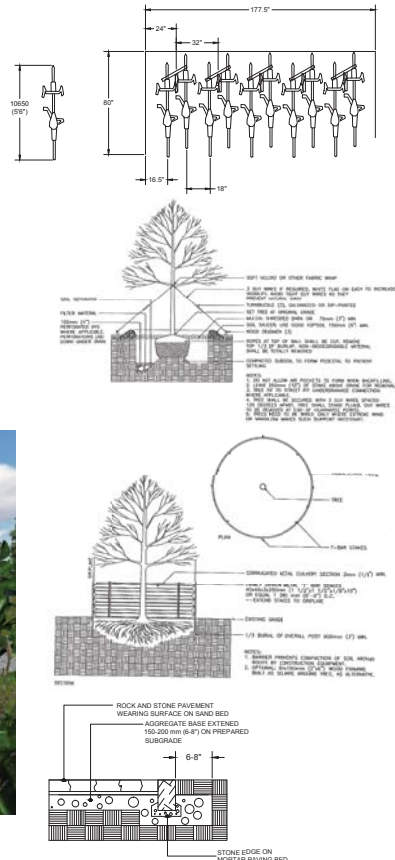


Bike Trail System

There are two bike trails with different difficulties provided on the site west US 17. Intend to attract younger communities to come to the site and explore.

Vegetable Plot Leasing Service

Allote parts of the open space on site to be leased to the local community to grow their own food. Also, family lots provide the great opportunities for the children to learn to grow and eat organically.



Kids Pump Track



Walking Trail and Bridge Intersection



Hofwyl-Broadfield Plantation

Yingtao Zhang
Senior Project
Professor Steffens