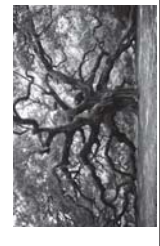




# Hofwyl Broadfield Plantation



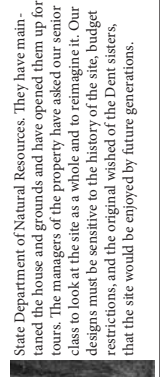
This land has much history that is unknown. Some of what we do know is that it was owned and built on by the Brailsford family in the 1700's. During this time the land was run



and occupied slaves from West Africa. The main crop at this time was rice. It was extremely labor intensive in the hot humid climate of South Georgia. The Hofwyl Broadfield Plantation was established in 1806. It was then occupied by the



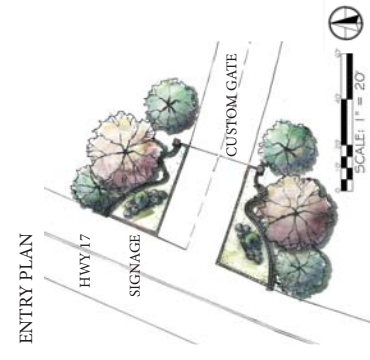
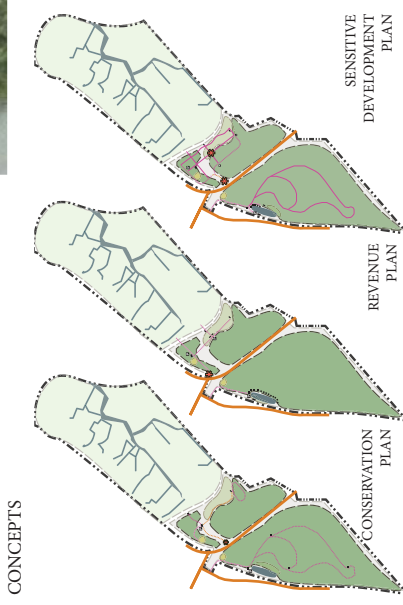
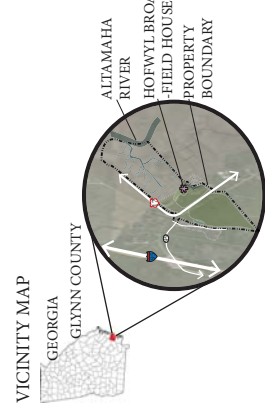
Troup's and Dent's. After the civil war the plantation turned to dairy production, as rice was no longer profitable. The Dent's had two daughters who had a dream to serve Hofwyl Broadfield, Ophelia and Mariam Dent. Today the property is owned and operated by the



State Department of Natural Resources. They have maintained the house and grounds and have opened them up for tours. The managers of the property have asked our senior class to look at the site as a whole and to reimagine it. Our designs must be sensitive to the history of the site, budget restrictions, and the original wishes of the Dent sisters, and that the site would be enjoyed by future generations.

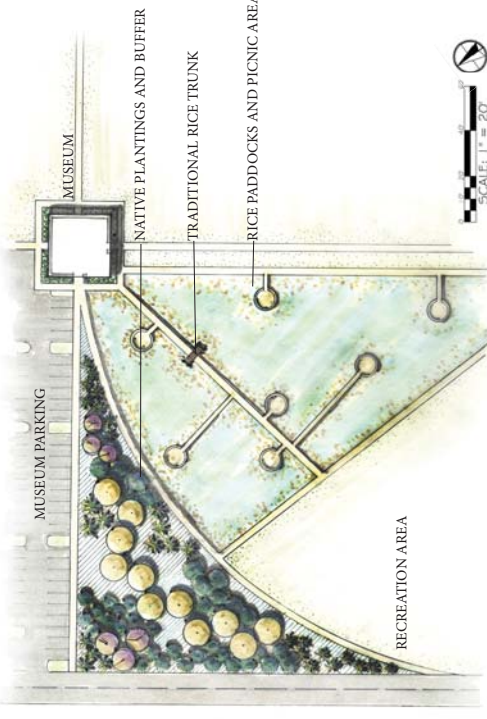
BROOKE JOHNSON · LAND 4900  
PROFESSOR STEFFENS · FALL 2015

THE MISSION OF THIS DESIGN IS TO CREATE A HISTORICALLY CONSCIOUS MASTERPLAN OF THE HOFWYL BROADFIELD PLANTATION THAT IS CONTEXTUALLY, REVENUE GENERATING, AND THAT PLANS FOR THE FUTURE OF HOFWYL BROADFIELD.



WEDDING CHAPEL INTERIOR VISUALIZATION

INTERACTIVE HISTORY MUSEUM AND WELCOME CENTER PLAN

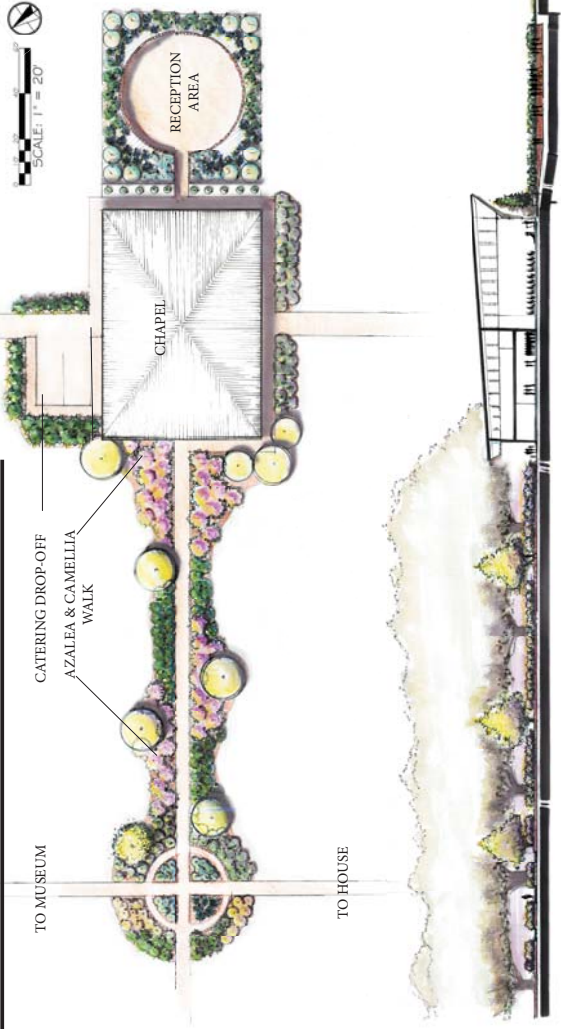


CUSTOM GATE VISUALIZATION



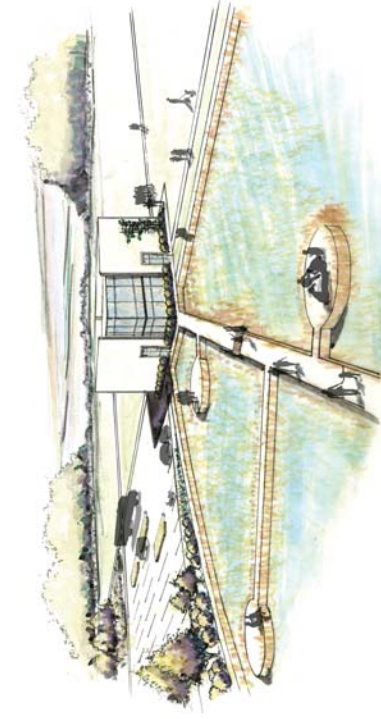
State Department of Natural Resources. They have maintained the house and grounds and have opened them up for tours. The managers of the property have asked our senior class to look at the site as a whole and to reimagine it. Our designs must be sensitive to the history of the site, budget restrictions, and the original wishes of the Dent sisters, and that the site would be enjoyed by future generations.

BROOKE JOHNSON · LAND 4900  
PROFESSOR STEFFENS · FALL 2015



WEDDING CHAPEL & GARDENS PLAN AND SECTION

INTERACTIVE HISTORY MUSEUM AND WELCOME CENTER PERSPECTIVE



THIS PERSPECTIVE SHOWS A TYPICAL DAY IN THE INTERACTIVE HISTORIC MUSEUM. THE BUILDING FUNCTIONS AS A GIFT SHOP AND WELCOME CENTER ON THE BOTTOM FLOOR. THE UPPER FLOOR HOLDS THE HOFWYL BROADFIELD HISTORIC MUSEUM. THE GLASS FRONTAGE ALLOWS THE VIEWER TO LOOK OUT ON INTERACTIVE RICE PADDOCKS CONTROLLED BY A TRADITIONAL RICE TRUNK. FROM THIS VANTAGE POINT, ONE CAN ALSO SEE THE ORIGINAL FOUNDATION OF THE HOME BELONGING TO THE BRAILSFORD FAMILY.

RICE PADDOCK VISUALIZATION



ENTRY PERSPECTIVE

