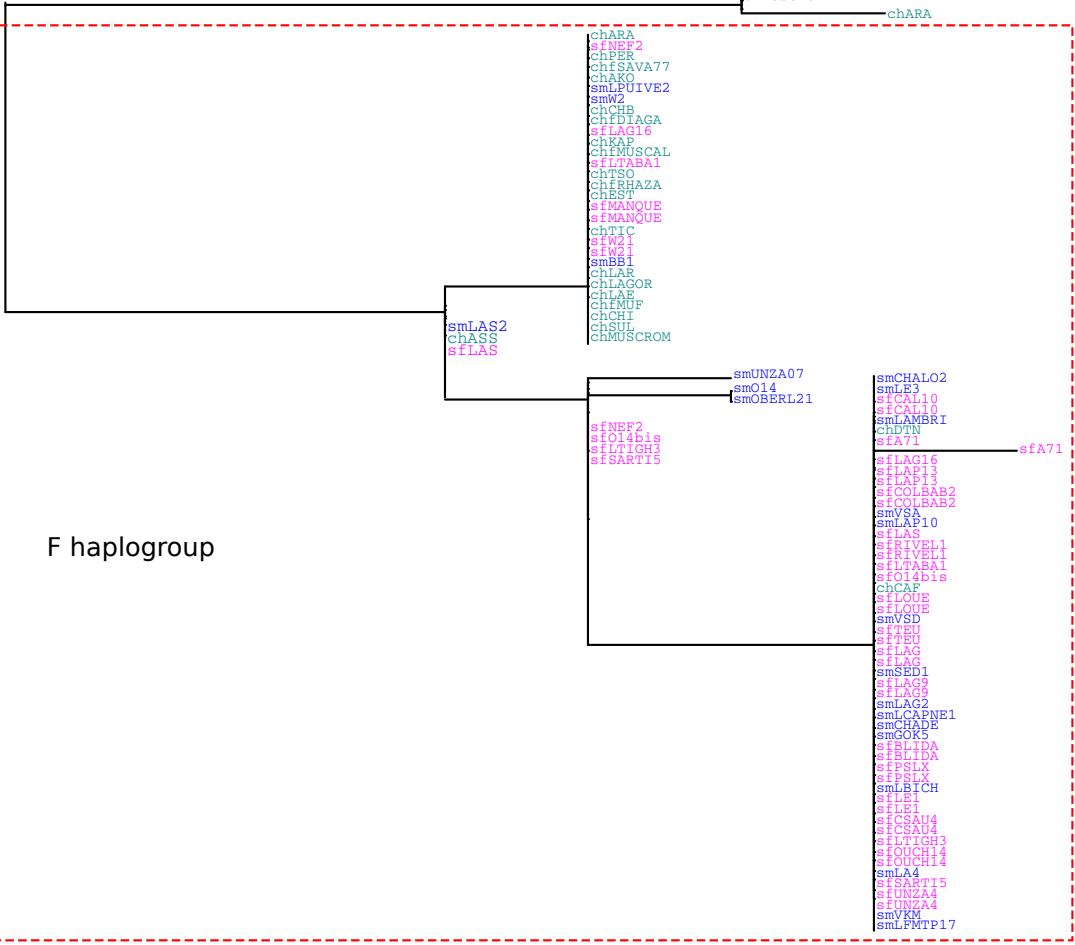




b) VSVV007 amplicon

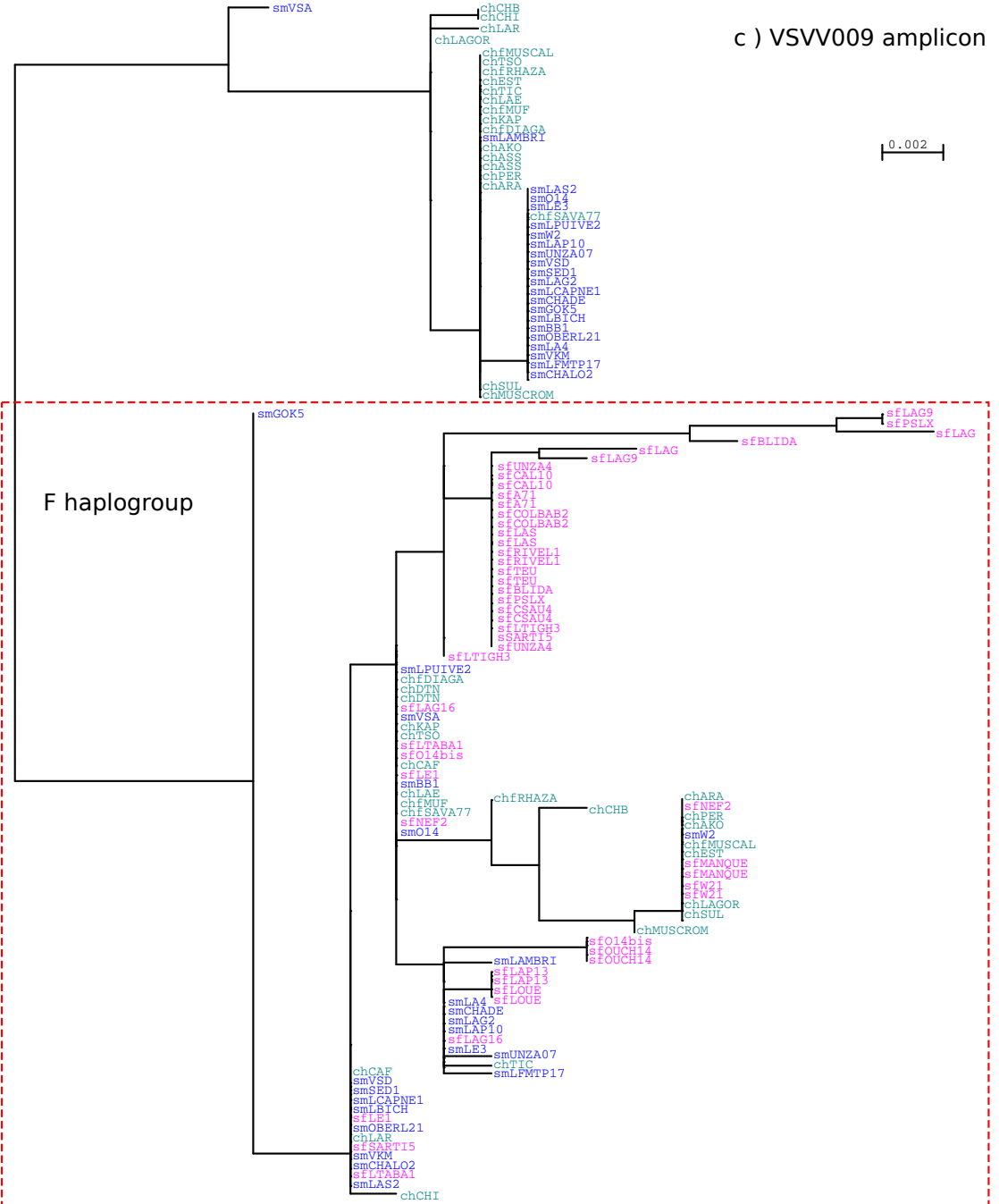
- chAKO
- smUNZA07
- chEST
- smO14
- smLAS2
- smLE2
- chPER
- chISAVA77
- chASS
- smLPUIVE2
- smW2
- smLAMBRI
- chCHE
- chFDLAGA
- chDTN
- smVSA
- smLAP10
- chKAP
- chFMUSCAL
- chTSO
- chCAF
- smVSD
- smSED1
- smLAG2
- chFRHAZA
- smLCAFNE1
- smCHAP5
- smGOK5
- smLBICH
- chTTC
- smBB1
- smOBERL21
- chLAR
- chLAGOR
- smLA4
- chLAE
- chFMUF
- chCHI
- smVKM
- smLFWTP17
- smCHALO2
- chSUL
- chMUSCROM

0.001



F haplogroup

c ) VSVV009 amplicon



d ) VSUV010 amplicon

