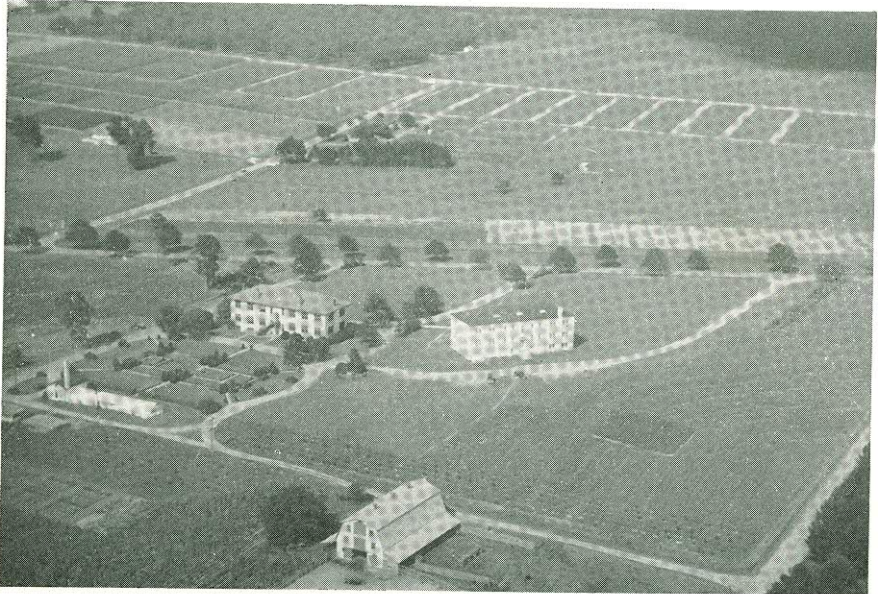


**TWENTY-SECOND ANNUAL REPORT
1941-1942**



**GEORGIA COASTAL PLAIN
EXPERIMENT STATION**

S. H. STARR, *Director*

TIFTON, GEORGIA

REGENTS OF THE UNIVERSITY SYSTEM OF GEORGIA

July 1, 1942

DISTRICT	REGENTS	ADDRESS
Ex Officio	GOVERNOR EUGENE TALMADGE	Atlanta
State-at-Large	JOHN J. CUMMINGS	Donalsonville
State-at-Large	L. W. ROBERT, JR.	Atlanta
State-at-Large	J. MARVIN BELL	Gainesville
State-at-Large	W. S. MORRIS	Augusta
State-at-Large	K. S. VARN	Waresboro
First	CAREY G. ARNETT	Halcyondale
Second	SUSIE T. MOORE	Tifton
Third	GEORGE C. WOODRUFF	Columbus
Fourth	JAMES S. PETERS	Manchester
Fifth	SCOTT CANDLER	Decatur
Sixth	JOE BEN JACKSON	Gray
Seventh	R. D. HARVEY	Lindale
Eighth	JULIAN STRICKLAND	Valdosta
Ninth	SANDY BEAVER	Gainesville
Tenth	JOE I. JENKINS	Hartwell

OFFICERS OF THE REGENTS

Chairman	SANDY BEAVER
Vice-Chairwoman	SUSIE T. MOORE
Chancellor	S. V. SANFORD
Secretary	L. R. SIEBERT
Treasurer	W. WILSON NOYES

STATION STAFF

S. H. STARR	Director ¹
S. A. PARHAM	Agronomist
J. H. TURNER, JR.	Asst. Agronomist
*H. S. GARRISON	Agronomist (Corn Breeding)
*J. G. JENKINS	Sea Island Cotton Specialist
*P. M. GILMER	Entomologist (Cotton Insects)
**NAOMI C. WOODROOF	Pathologist (Peanut Breeding)
*J. M. CARR	Agronomist (Tobacco)
*J. G. GAINES	Pathologist (Tobacco)
*J. L. STEPHENS	Agronomist (Forage Crops and Pastures)
*J. C. WALTERS	Asst. Agronomist (Forage Crops and Pastures)
*G. W. BURTON	Geneticist (Grass Breeding)
B. L. SOUTHWELL	Animal Husbandman
*J. W. STEVENSON	Jr. Animal Husbandman (Range Grazing)
*H. H. BISWELL	Forest Ecologist (Range Grazing)
*W. O. SHEPHERD	Jr. Range Examiner (Range Grazing)
*W. R. SUTTON (resigned April, 1942)	Biochemist
*T. S. BOGGESS	Biochemist
*F. E. KNOX	Asst. Chemist
OTIS WOODARD	Horticulturist
A. L. CRITTENDEN (resigned June, 1942)	Asst. Horticulturist
*W. D. MOORE	Pathologist (Vegetable Plants)
*A. L. TAYLOR	Nematologist
*C. W. MCBETH	Nematologist
FRED BELL	Farm Superintendent
MRS. C. R. DYER	Bookkeeper and Stenographer
MRS. J. L. STEPHENS	Librarian and Stenographer
MRS. ED. ALMON	Clerk
MRS. TRUDIE MAE HARRELL	Clerk
MRS. GRACE T. MANGHAM	Clerk

Sub-Stations

W. T. CLARY	Supt., Field Station (Truck Crops), Darien
J. L. LAPRADE	Agronomist, Shade Tobacco Branch Station, Attapulgus
E. J. GIBSON (on military leave)	Pathologist, Shade Tobacco Branch Station, Attapulgus

*In cooperation with the U. S. Department of Agriculture.

**In cooperation with the U. S. Department of Agriculture and the Georgia Experiment Station.

¹Deceased after publication date. Succeeded by Geo. H. King.

CONTENTS

	Page
Introduction	9
Weather Data	13
 AGRONOMY	
Cotton	15
Sea Island Cotton Studies	20
Cotton Insect Investigations	21
Corn	24
Corn Breeding	29
Peanuts	31
Peanut Breeding	36
Peanut Leaf Spot Diseases	38
Peanut Seed Treatment	38
 Small Grains:	
Oats	39
Oat Breeding	39
Wheat	39
Rye	42
 Tobacco:	
Flue-Cured Tobacco (Agronomy)	
General Recommendations:	
Soils	43
Varieties	43
Seed Beds	44
Field Fertilizers	45
Spacing in Drill and Row	48
Topping	48
Curing	49
Progress Report for 1941:	
Complete Fertilizer Test	49
Acid, Basic, and Neutral Fertilizers	49
Calcium and Magnesium Tests	49
Minor Element Tests	49
Potash and Sulphur Interrelation Tests	50
Topping and Spacing Tests	50
Rotations	50
Seed Beds	50
 Flue-Cured Tobacco Diseases:	
Disease Survey	50
Blue Mold Control by Spraying	52
Blue Mold Control by Cultural Practices	55
Root-Knot and Weed Control in Tobacco Beds	56
Root-Knot Control in Tobacco Fields	56
 Shade Tobacco:	
Agronomy	58
Nutrition Tests	58

