

GEORGIA COASTAL PLAIN EXPERIMENT STATION

S. H. STARR, Director

TIFTON, GEORGIA

Twelfth Annual Report 1931

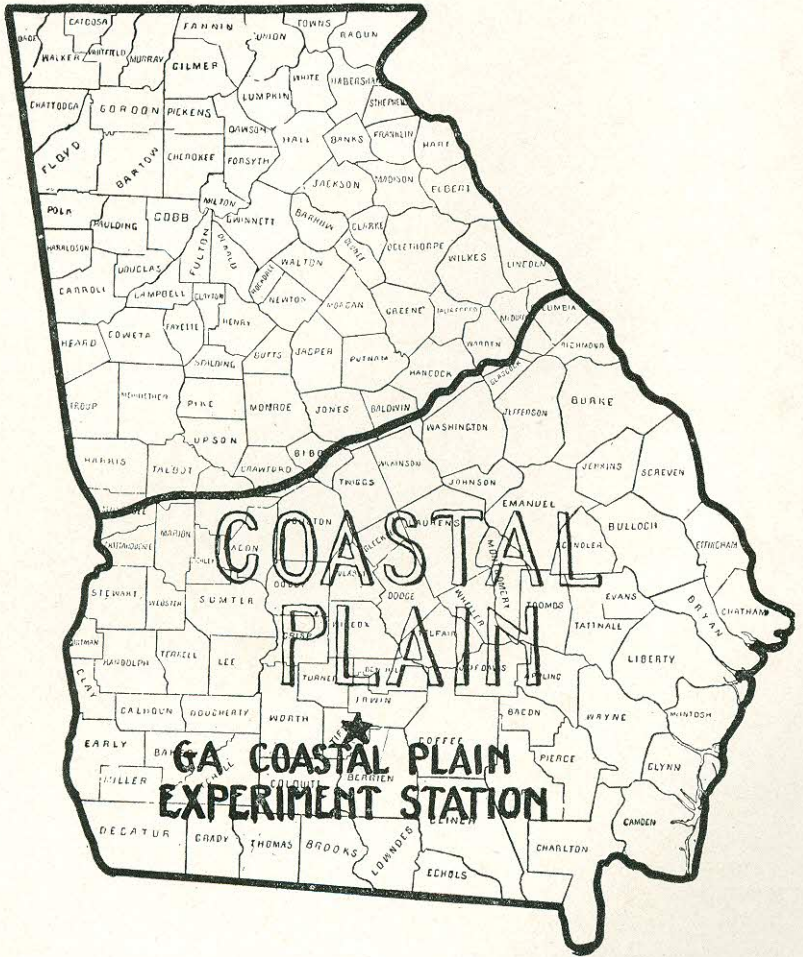
REPORT OF THE MAIN STATION AT TIFTON, GEORGIA

AND

THE BRANCH STATION AT DARIEN, GEORGIA

JUNE 1932

BULLETIN 19



Coastal Plain Area of Georgia

BOARD OF TRUSTEES SERVING DURING 1931 AND PREVIOUS YEARS

EX OFFICIO

L. G. HARDMAN, <i>Governor of Georgia</i>	Atlanta
EUGENE TALMADGE, <i>Commissioner of Agriculture</i>	Atlanta

APPOINTED BY THE GOVERNOR:

R. W. GOODMAN, <i>Chairman</i>	Tifton
J. H. BROWN, <i>Vice-Chairman</i>	Cordele
A. J. BIRD.....	Metter
H. W. HOPKINS.....	Thomasville
NEWTON WATKINS.....	Fitzgerald
J. W. SLADE.....	Sandersville
H. H. ELDERS.....	Reidsville

REGENTS OF THE UNIVERSITY SYSTEM OF GEORGIA WHO ASSUMED MAN- AGEMENT JANUARY 1, 1932

GOVERNOR RICHARD B. RUSSELL, JR., <i>Ex-Officio Member</i>	Atlanta
A. PRATT ADAMS, <i>First District</i>	Savannah
W. J. VEREEN, <i>Second District</i>	Moultrie
GEORGE C. WOODRUFF, <i>Third District</i>	Columbus
CASON CALLAWAY, <i>Fourth District</i>	LaGrange
HUGHES SPALDING, <i>Fifth District</i>	Atlanta
W. D. ANDERSON, <i>Sixth District</i>	Macon
MARTHA BERRY, <i>Seventh District</i>	Rome
M. D. DICKERSON, <i>Eighth District</i>	Douglas
R. B. RUSSELL, SR., <i>Ninth District</i>	Winder
T. F. GREEN, <i>Tenth District</i>	Athens
PHILIP WELTNER, <i>State-at-Large</i>	Atlanta

STATION STAFF:

S. H. STARR, *Director*

OTIS WOODARD, *Horticulturist*

S. A. PARHAM, *Agronomist*

*J. M. CARR, *Tobacco Specialist*

*J. G. GAINES, *Tobacco Disease Specialist*

*J. L. STEPHENS, *Forage Crop and Pasture Specialist*

*J. C. WALTERS, *Asst. Forage Crop and Pasture Specialist*

†H. S. GARRISON, *Corn Breeding Specialist*

‡FRANK VAN HALTERN, *Melon Disease Specialist*

FRED BELL, *Farm Superintendent*

MRS. J. L. STEPHENS, *Librarian and Stenographer*

MRS. C. R. DYER, *Bookkeeper and Stenographer*

A. L. CRITTENDEN, JR., *Supt. Branch Station, Darien*

*—Agent U. S. D. A.

†—Assistant Agronomist U. S. D. A.

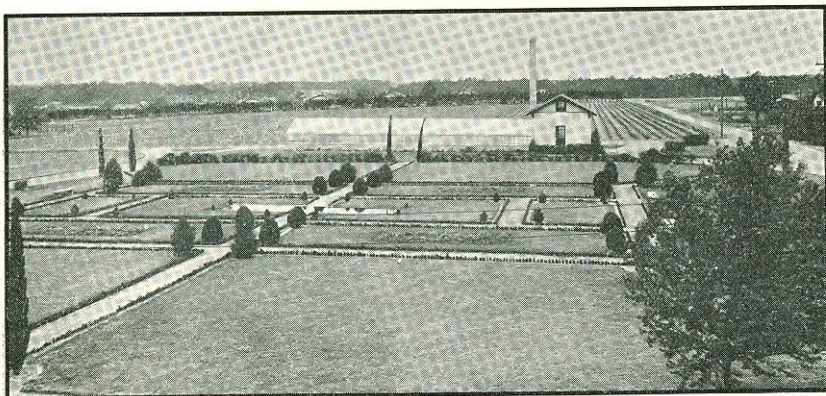
‡—Assoc. Botanist, Ga. Exp. Sta.

CONTENTS

	Page
INTRODUCTION	7
AGRONOMY:	
Cotton	11
Corn	22
Corn Breeding	25
Peanuts	27
Oats	30
Wheat	32
Rye	36
Barley	36
Forage Crop and Pasture Experiments:	
Soy Beans	38
Cowpeas	40
Velvet Beans	41
Crotalarias	42
Winter Cover Crops	44
Austrian Winter Peas	47
Vetches	48
Lespedezas	51
Grasses	52
Pastures	52
HORTICULTURE:	
Sweet Potatoes	54
Tomatoes	57
Tomato Seedbed Diseases	62
Watermelons	63
Downy Mildew of Cucurbits	65
Irish Potatoes	66
Lima Beans	72
Asparagus	74
Other Vegetable Crops	74
Fruits and Nuts:	
Peaches	76
Plums	78
Pecans	78
Pears	80
Grapes	81
Dewberries	82
Strawberries	83
Figs	83
Jujubes	84

CONTENTS (Continued)

	Page
Raspberries -----	84
Blueberries -----	85
Blackberries -----	85
Apples -----	86
Citrus Fruits -----	86
Other Fruits and Nuts -----	87
Tung Oil -----	87
 TOBACCO:	
Fertilizers -----	89
Varieties -----	93
 TOBACCO DISEASES:	
Disease Survey -----	94
Root Knot -----	94
Downy Mildew (Blue Mold) -----	97
REPORT OF THE BRANCH STATION AT DARIEN -----	98



Greenhouse and west view of Experiment Station grounds.

