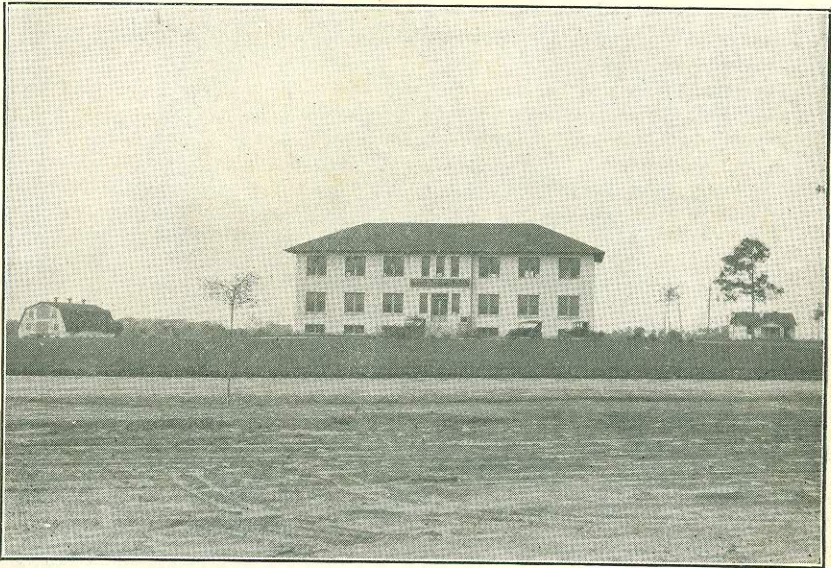


GEORGIA COASTAL PLAIN EXPERIMENT STATION

TIFTON, GEORGIA

June 1, 1925.

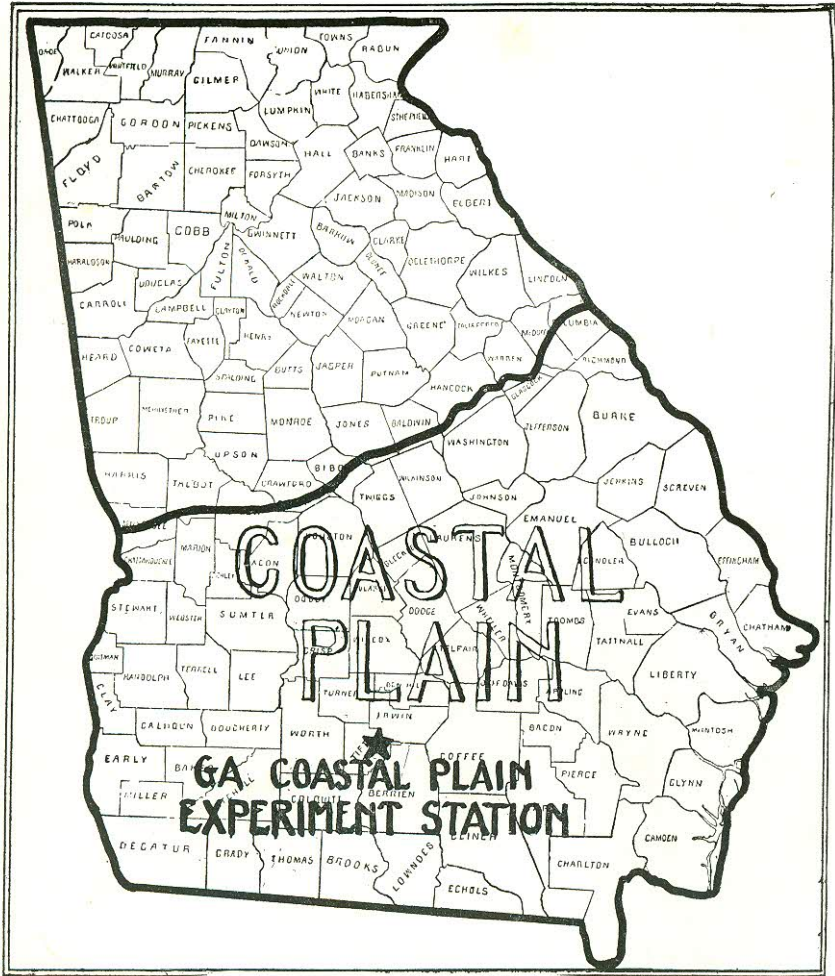
Bulletin 5.



FIFTH ANNUAL REPORT

1924

S. H. STARR, Director.



COASTAL PLAIN AREA OF GEORGIA

BOARD OF TRUSTEES.

Ex-Officio:

Clifford Walker, Governor of Georgia.....Atlanta
J. J. Brown, Commissioner of Agriculture.....Atlanta

Appointed by the Governor:

R. W. Goodman, Chairman.....Tifton
J. H. Brown, Vice-Chairman.....Cordele
A. J. Bird, Secretary and Treasurer.....Metter
H. W. Hopkins.....Thomasville
Newton Watkins.....Fitzgerald
J. W. Slade.....Sandersville
H. H. Elders.....Reidsville

STATION STAFF:

S. H. Starr, Director.

W. J. Davis, Agronomist.

Otis Woodard, Horticulturist.

*J. C. Hart, Tobacco Specialist, (Agronomy).

†R. C. Thomas, Tobacco Disease Specialist.

Fred Bell, Farm Superintendent.

Jessie Lee Reynolds, Clerk and Stenographer.

*Assistant Agronomist. U. S. D. A.

†Agent, U. S. D. A.

Tifton, Ga., June 1, 1925.

To His Excellency, Clifford Walker,
Governor of Georgia.

Sir:

In accordance with the regulations of the Board of Trustees, I have the honor to transmit to you herewith the Fifth Annual Report of the Georgia Coastal Plain Experiment Station as submitted to the Board, May 5th, 1925.

Very respectfully,

R. W. GOODMAN, Chairman.

Tifton, Ga., May 5, 1925.

To the Honorable Board of Trustees of the
Georgia Coastal Plain Experiment Station.

Gentlemen:

I have the honor to submit to you herewith the Fifth Annual Report of the Georgia Coastal Plain Experiment Station covering operations for the year 1924. All of the members of the Staff have assisted in preparing this report.

Respectfully submitted,

S. H. STARR, Director.

CONTENTS

	Page
Introduction	6
Agronomy:	
Small Grains	8
Cotton	14
Corn	21
Peanuts	23
Hay	24
Soy Beans	25
Millets	26
Velvet Beans	26
Canada Field Peas	27
Vetches	28
Bur Clover	28
Grasses	29
Horticulture:	
Sweet Potatoes	31
Tomatoes	36
Watermelons	39
Irish Potatoes	40
Beans	42
English Peas	44
Fruits	46
Tobacco	49
Live Stock	53
Treasurer's Report	54

