

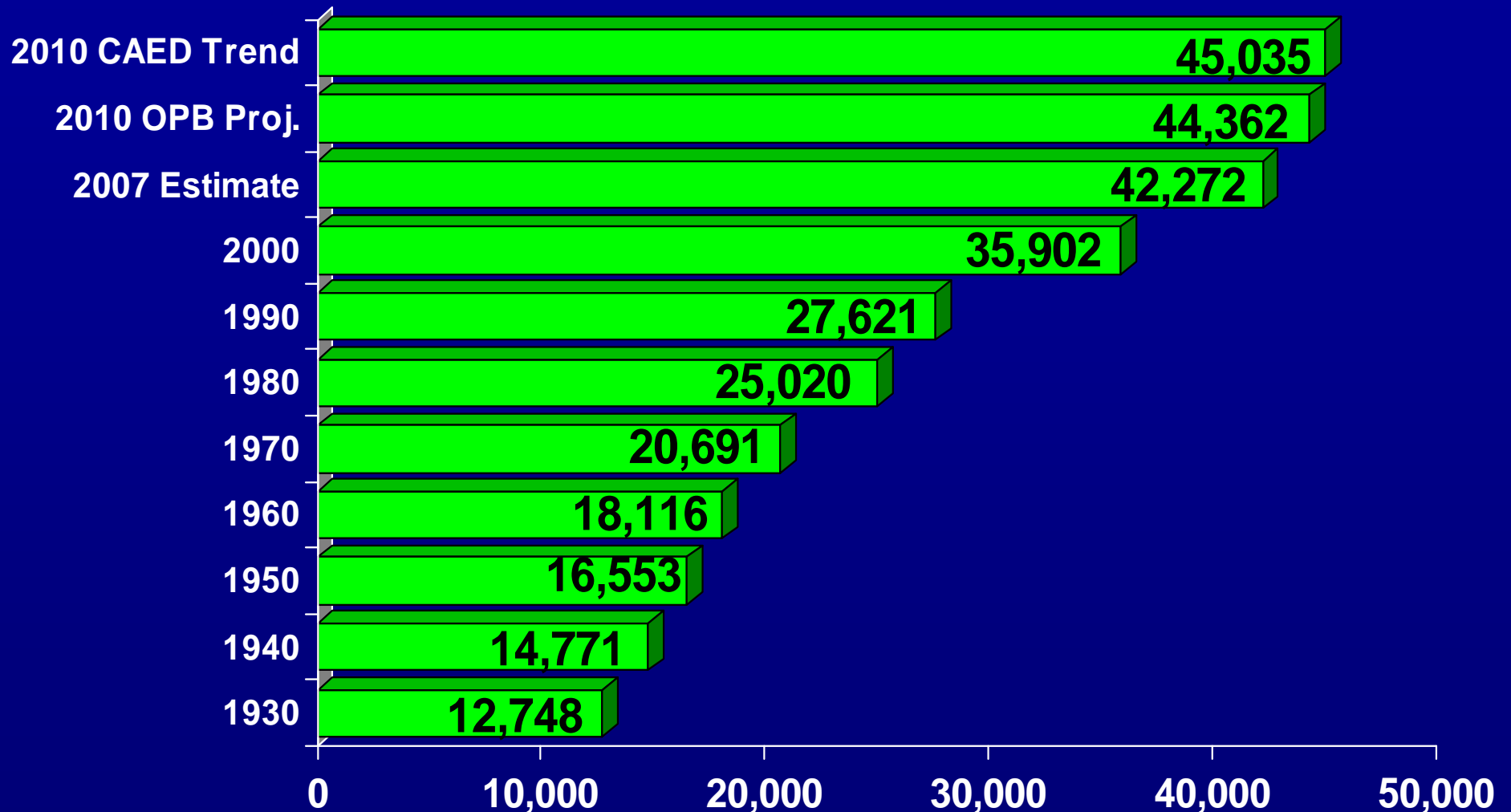
# Habersham County Community Profile



46th in order of  
county creation  
December 15, 1818

Prepared for Habersham County Cooperative Extension  
by the Center for Agribusiness and Economic Development  
The University of Georgia • Athens, GA

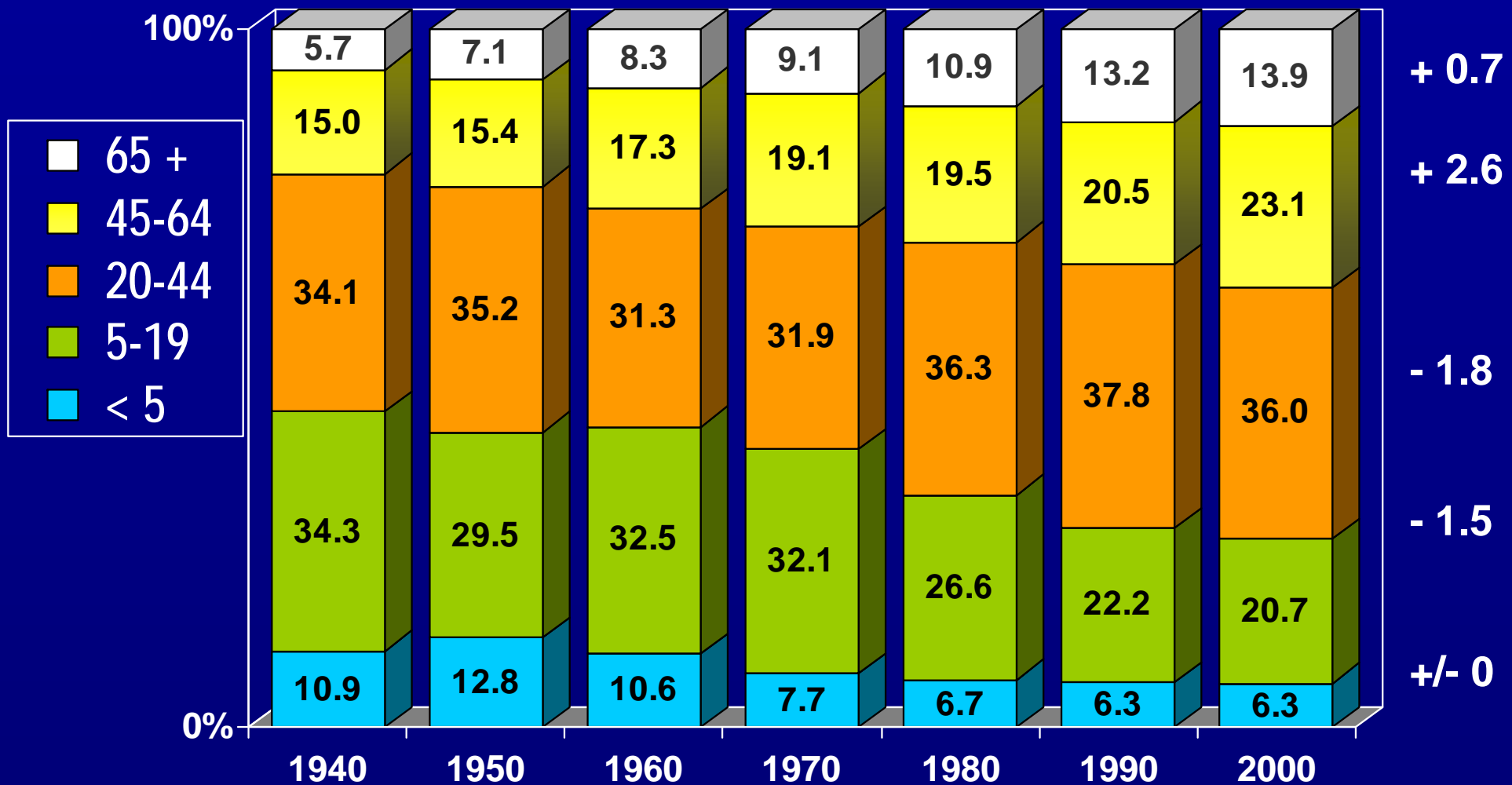
# Total Population Habersham County



Primary data sources: U.S. Census Bureau, decennial censuses & estimate; OPB (State Office of Planning & Budget); CAED (Center for Agribusiness and Economic Development) 3/08.

# Population Composition by Age Habersham County

Change in  
proportion  
1990-2000



2007 Estimated Median Age

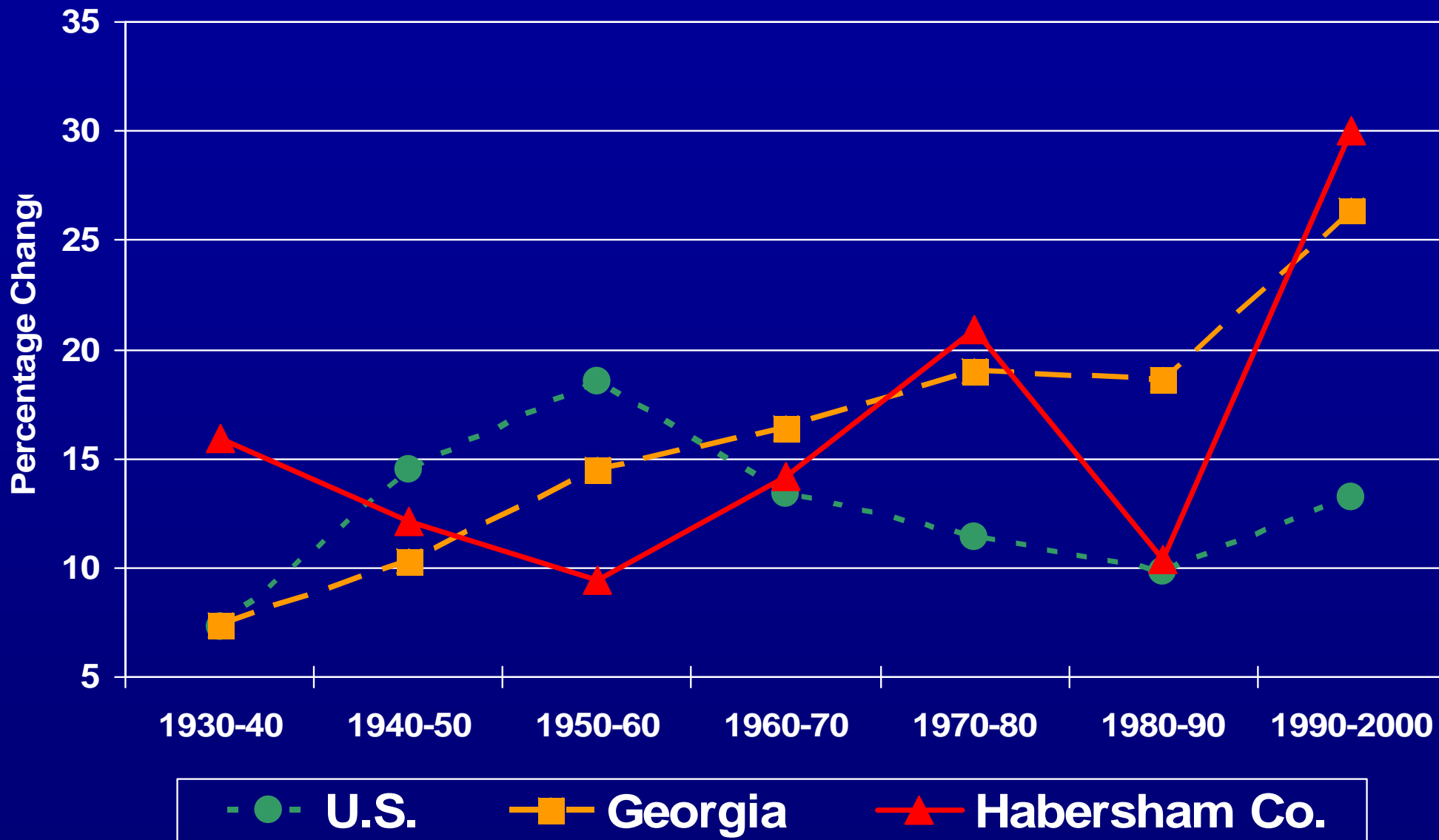
Habersham Co. = 35.8 yrs.

GA = 34.7 yrs.

# 2007 County Population Comparisons

County	Total	Total Rank	Density per sq.mi. land area	% Chg. 2000-07	Rank of % Chg.
HABERSHAM	42,272	46	152.0	17.8	34
BANKS	16,556	98	70.9	14.8	43
HALL	180,175	11	457.7	29.3	16
RABUN	16,519	99	44.5	9.8	60
STEPHENS	25,268	69	141.0	-0.7	129
TOWNS	10,894	120	65.4	16.9	37
WHITE	25,020	72	103.6	25.5	21

# Population Change: 1930-2000



Primary data source: U.S. Census Bureau

# Components of Population Change

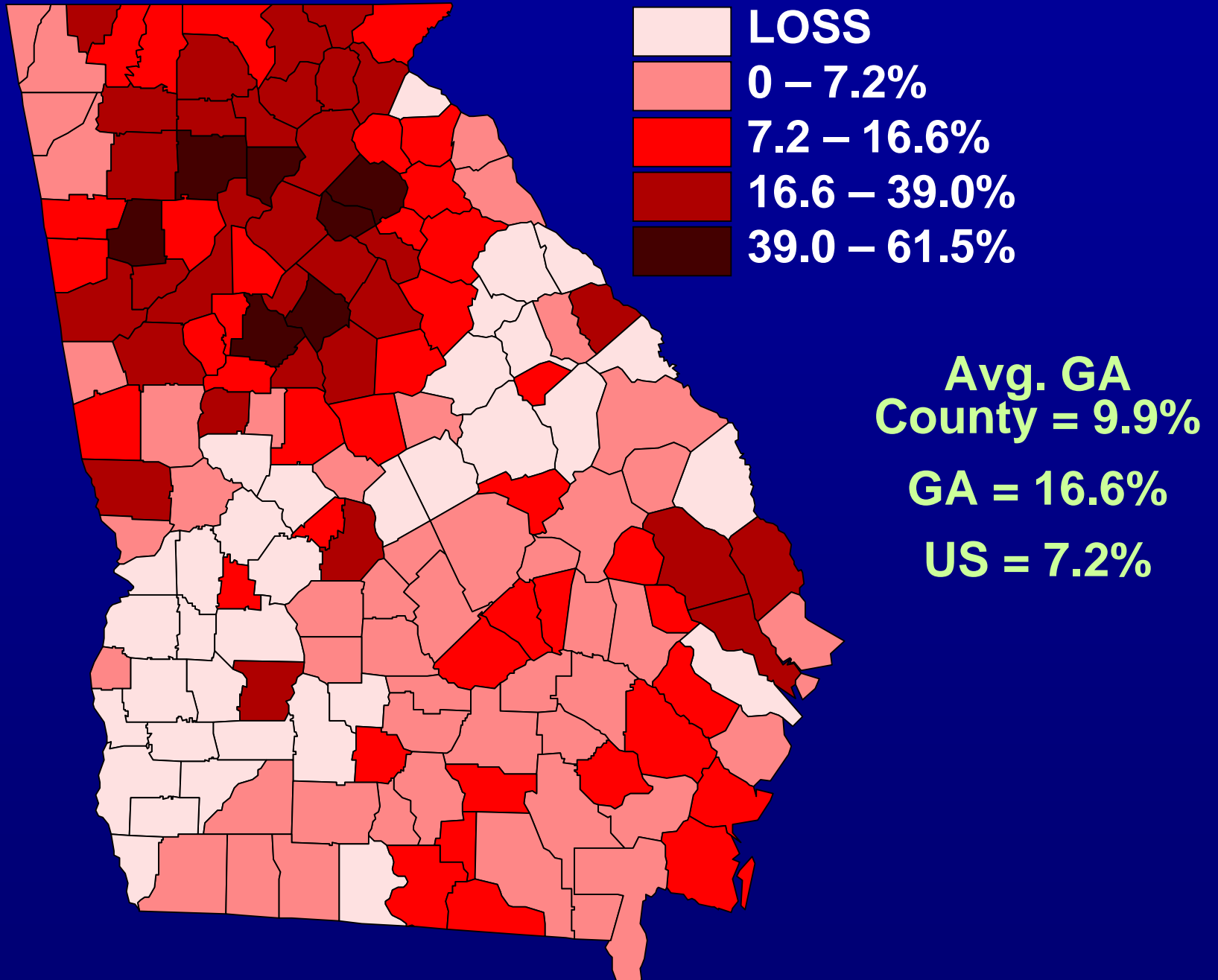
## Natural Increase & Net Migration\*

Area	2000-2007 Numerical Change*	2000-2007 # Natural Increase (Births-Deaths)	2000-2007 # Net Migration	2006-07 1-yr Natural Increase Rate	2006-07 1 yr.Net Migration Rate
HABERSHAM	6,374	1,696	4,846	7.2	26.2
BANKS	2,134	612	1,579	4.9	18.0
HALL	40,860	14,046	26,724	12.2	32.2
RABUN	1,469	121	1,409	1.8	11.2
STEPHENS	-167	174	-238	2.3	-0.1
TOWNS	1,575	-366	1,972	-3.8	29.7
WHITE	5,076	550	4,595	3.9	17.6
Avg. County	8,540	3,283	4,564	5.3	6.6
GEORGIA	1,357,934	521,982	725,733	8.3	13.3

\* Numerical change includes “residual” not represented in either NI or NM.

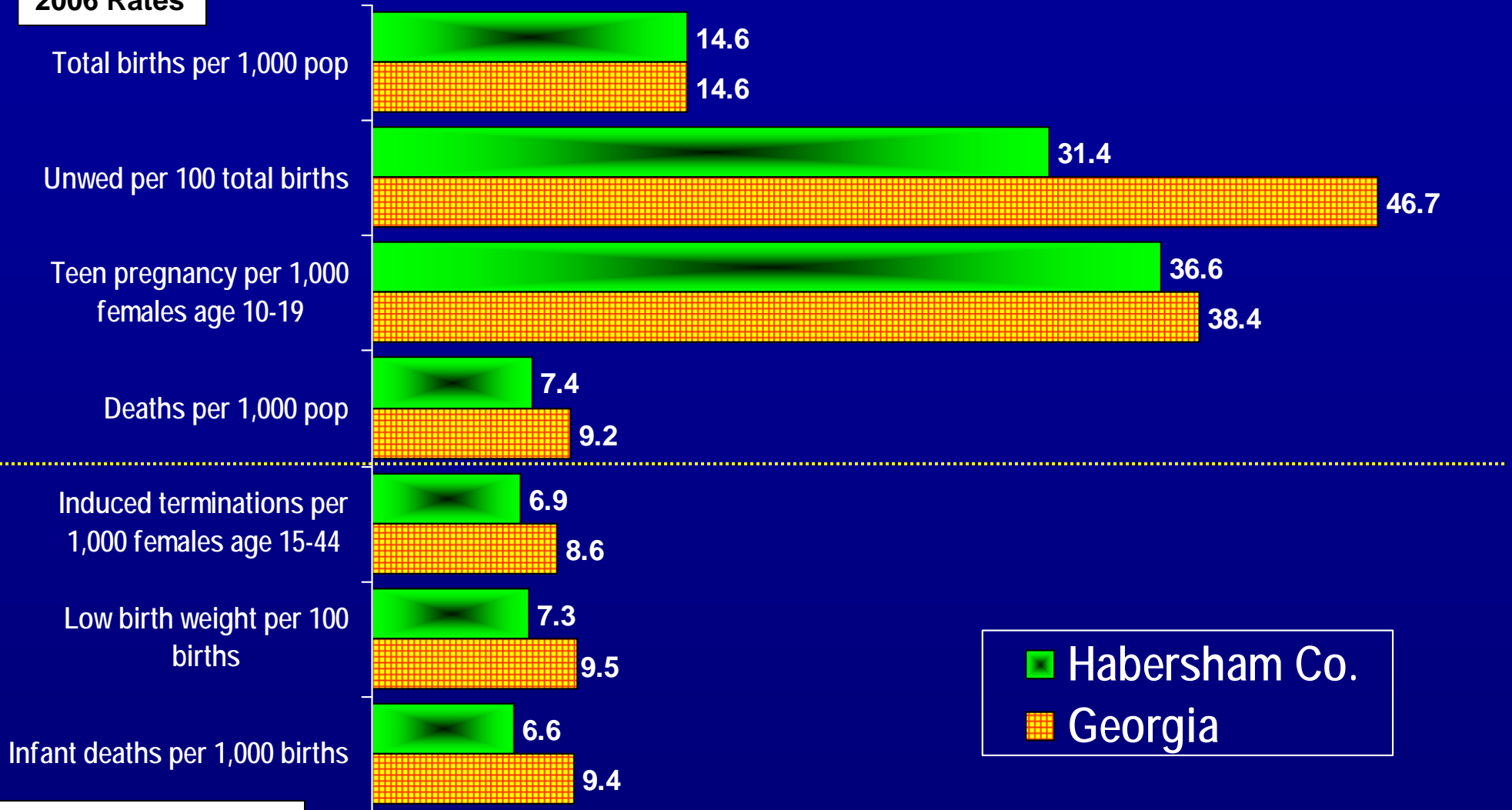
Primary data source:  
U. S. Census Bureau (3/08)

# Population Change: 2000-2007



# Selected Vital Statistics

## 2006 Rates



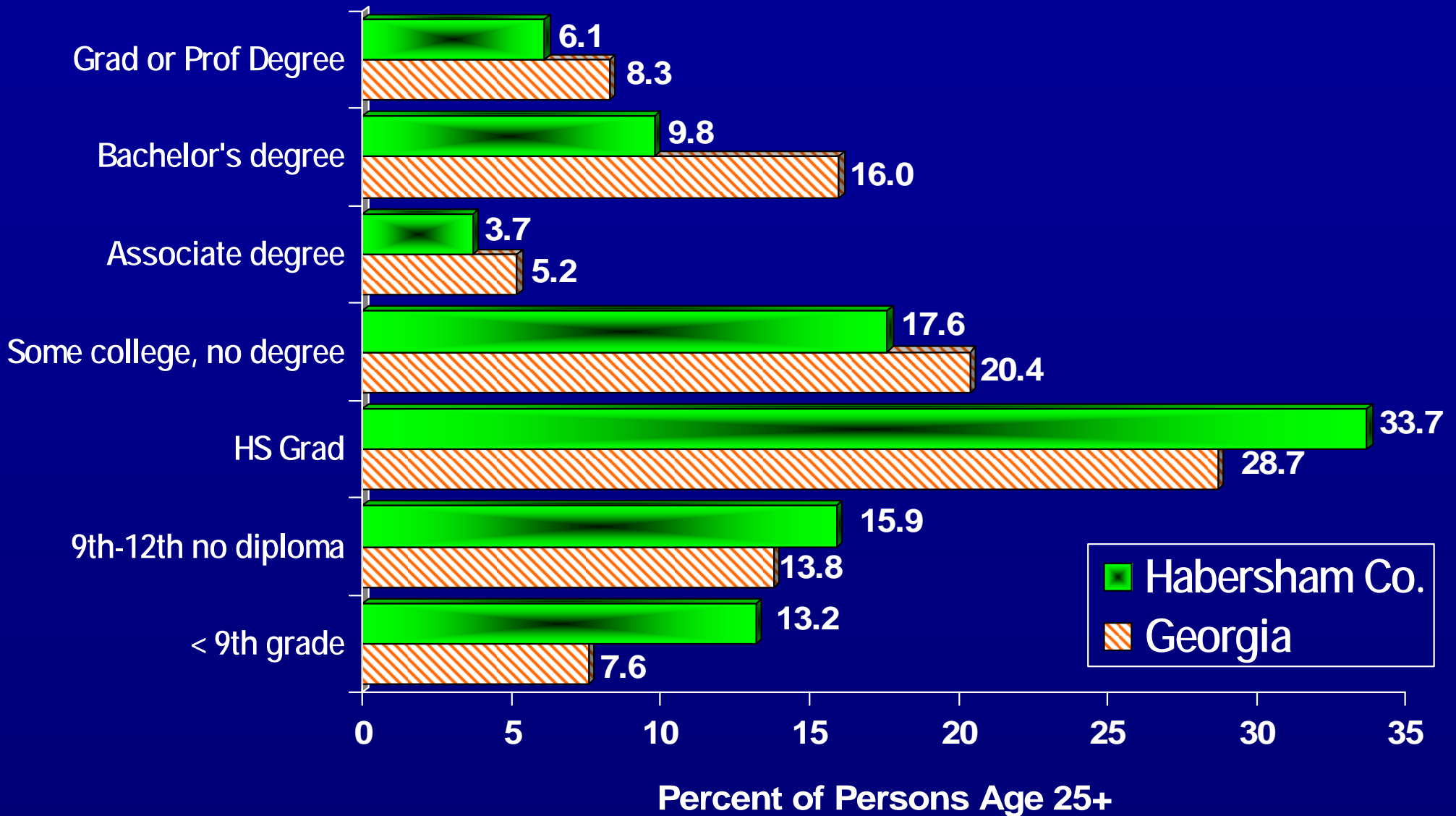
## 10-yr. rates 1997-2006

**2006 Habersham Co. Natality Data**  
**599 total births, 188 unwed births**  
**38 induced terminations**  
**88 teen pregnancies**  
**55 low birth weight babies**

**2006 Habersham Co. Mortality Data**  
**303 total deaths**  
**4 infant deaths**



# Highest Level of Educational Attainment: 2000



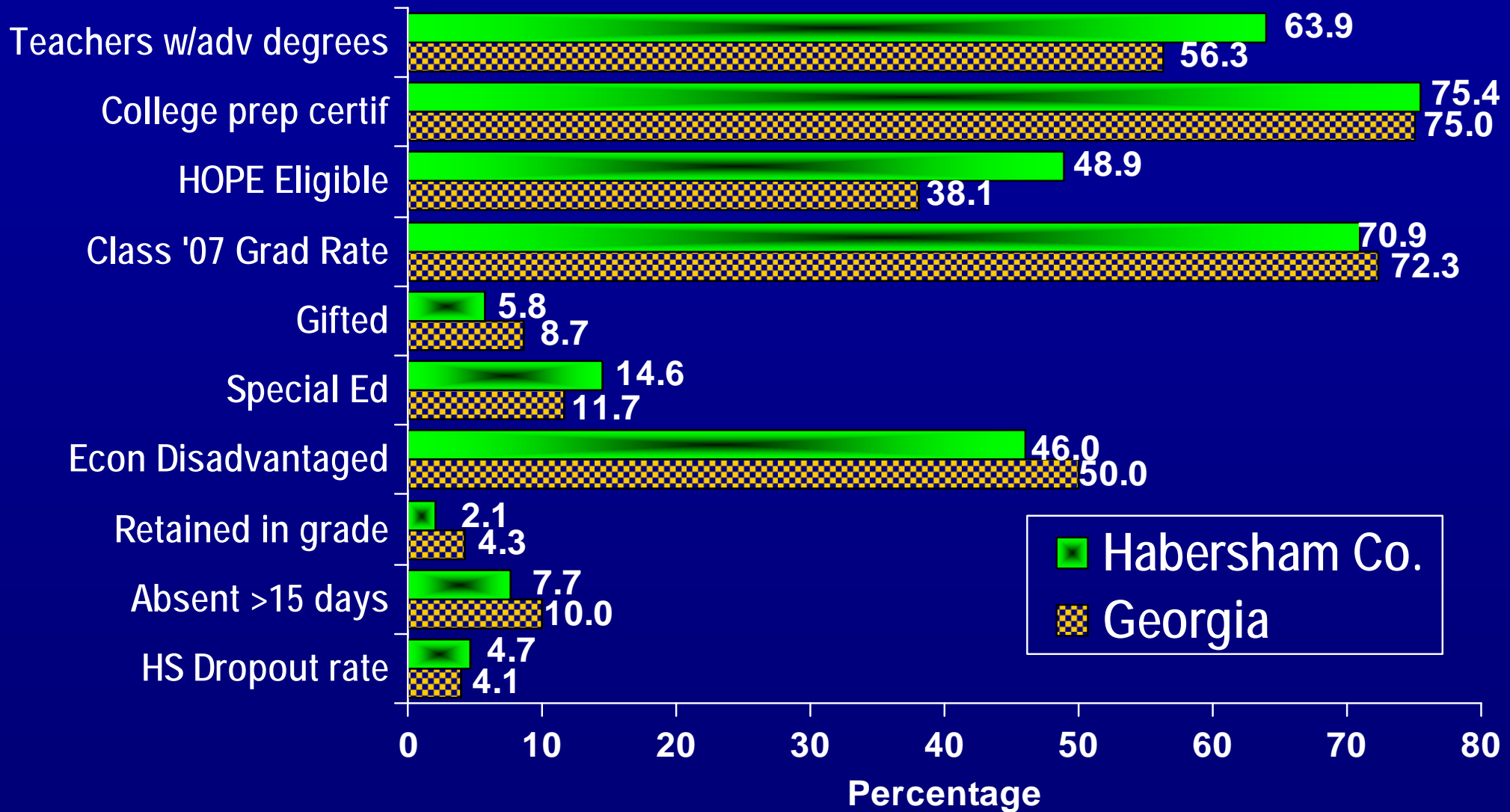
**Habersham Co.**

**Not completing HS = 29.1%**

**With a bachelor's + degree = 15.8%**

Primary data source: U.S. Census Bureau

# Selected Public School Statistics School Year 2006-07



■ Habersham Co.  
▨ Georgia

Habersham Co.

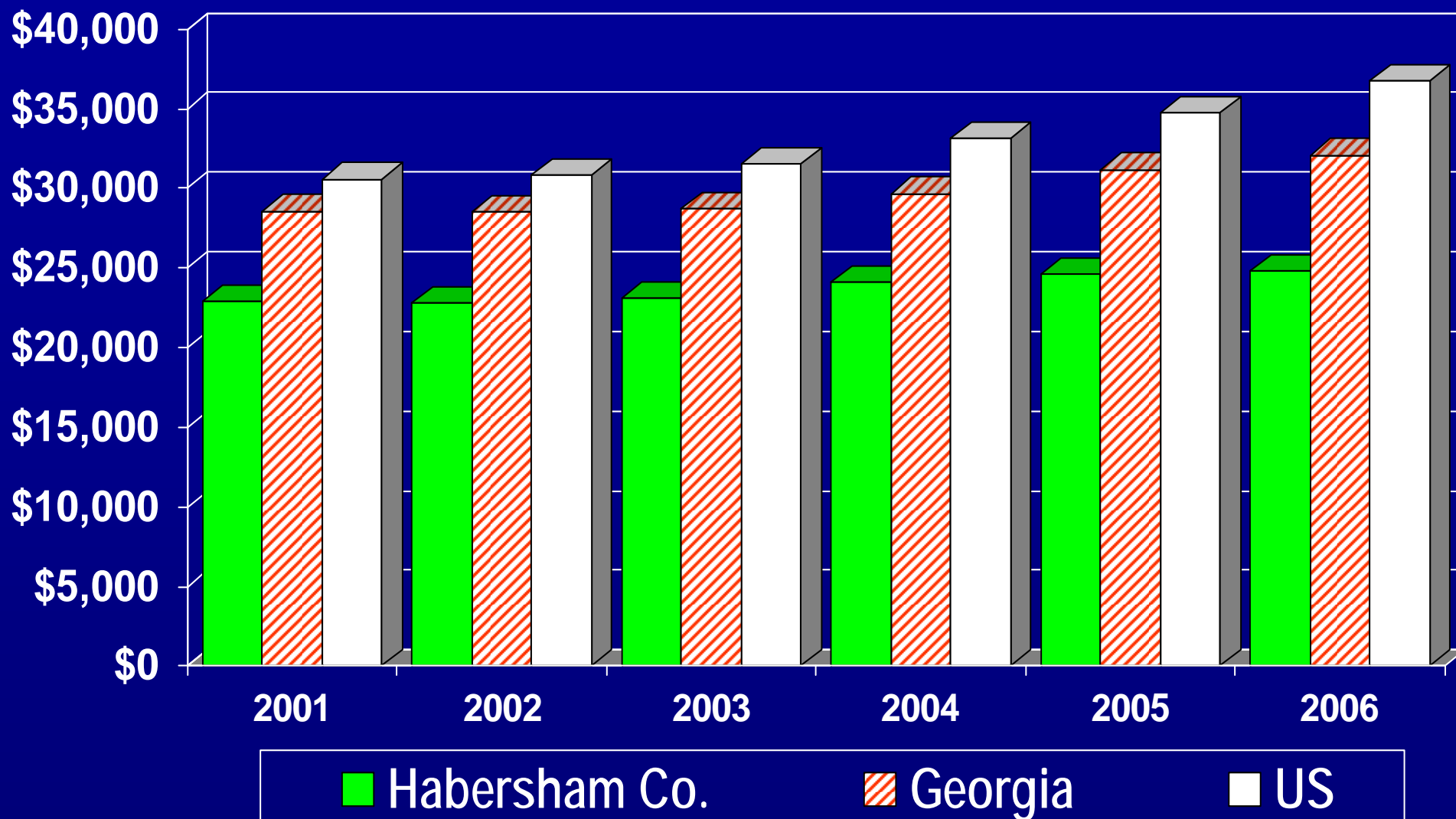
K12 enrollment = 6,495

HS dropouts = 88

General Fund Expenditures per FTE = \$8,374

Primary data source:  
 Governor's Office of Student Achievement

# Per Capita Income: 2001-2006

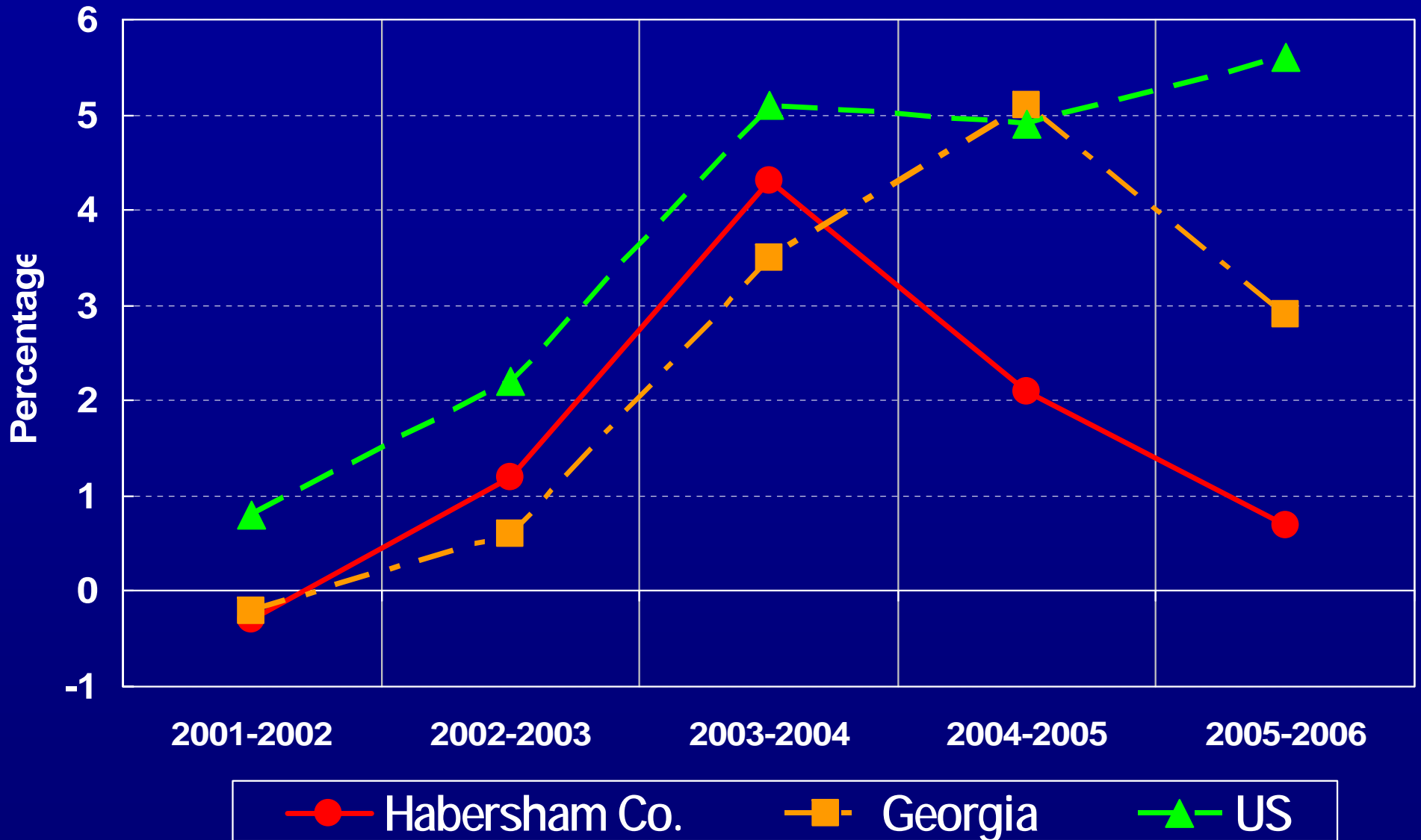


**2006 PCI**  
**Habersham Co. = \$24,801**

**Georgia = \$32,095**  
**US = \$36,714**

# Per Capita Income: 2001-2006

## Percentage Change

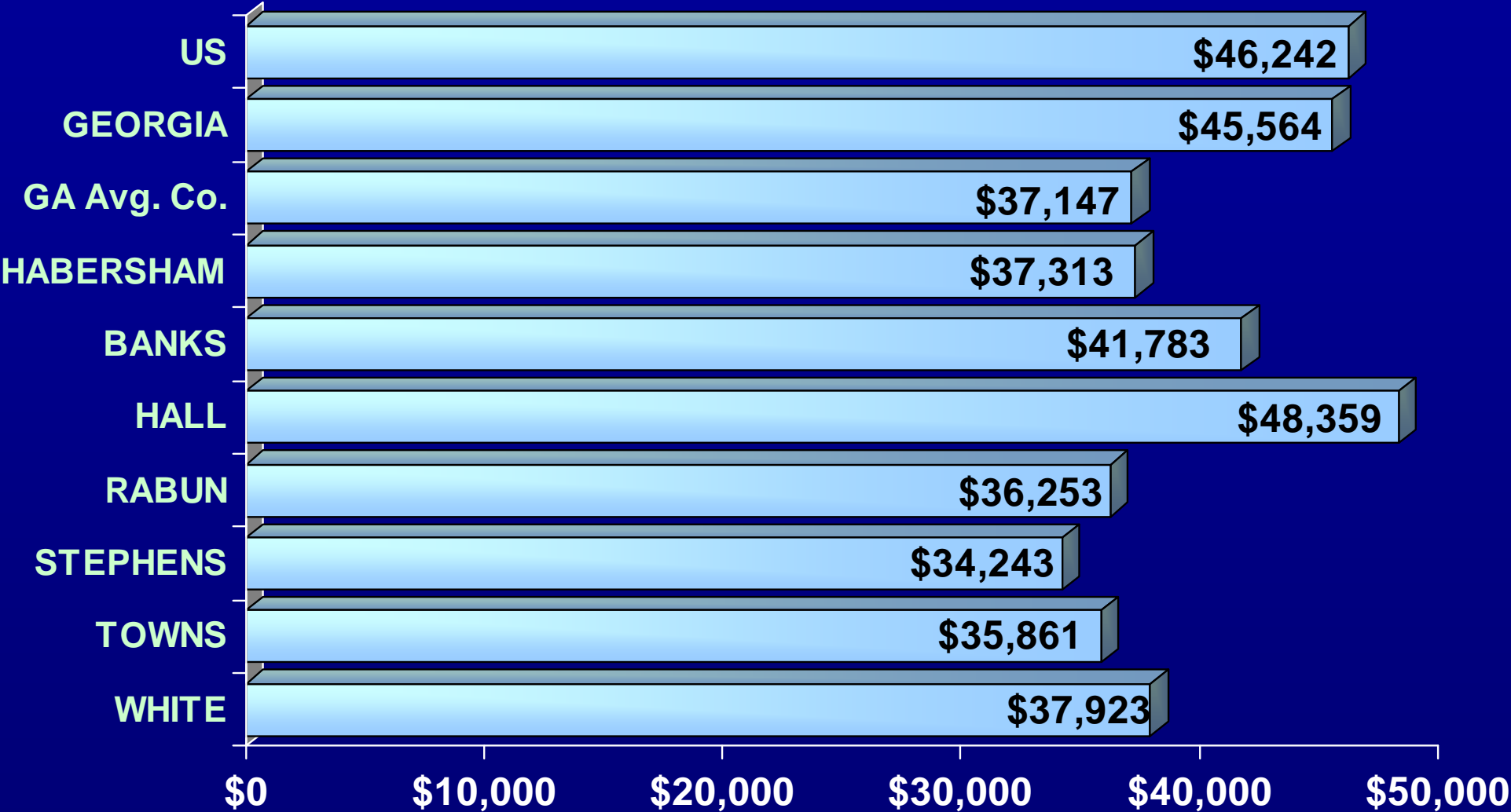


## Per Capita Income: 2006

County	PCI	Rank of PCI	% PCI of GA Total	% Change in PCI 2001-2006
HABERSHAM	\$24,801	82	77.3	8.3
BANKS	\$27,423	37	85.4	17.3
HALL	\$28,110	31	87.6	12.6
RABUN	\$27,523	36	85.8	17.2
STEPHENS	\$25,931	59	80.8	12.1
TOWNS	\$28,819	28	89.8	23.5
WHITE	\$24,372	89	75.9	5.6
GA Avg. Co.	\$25,483	--	79.4	14.5

# Median Household Income

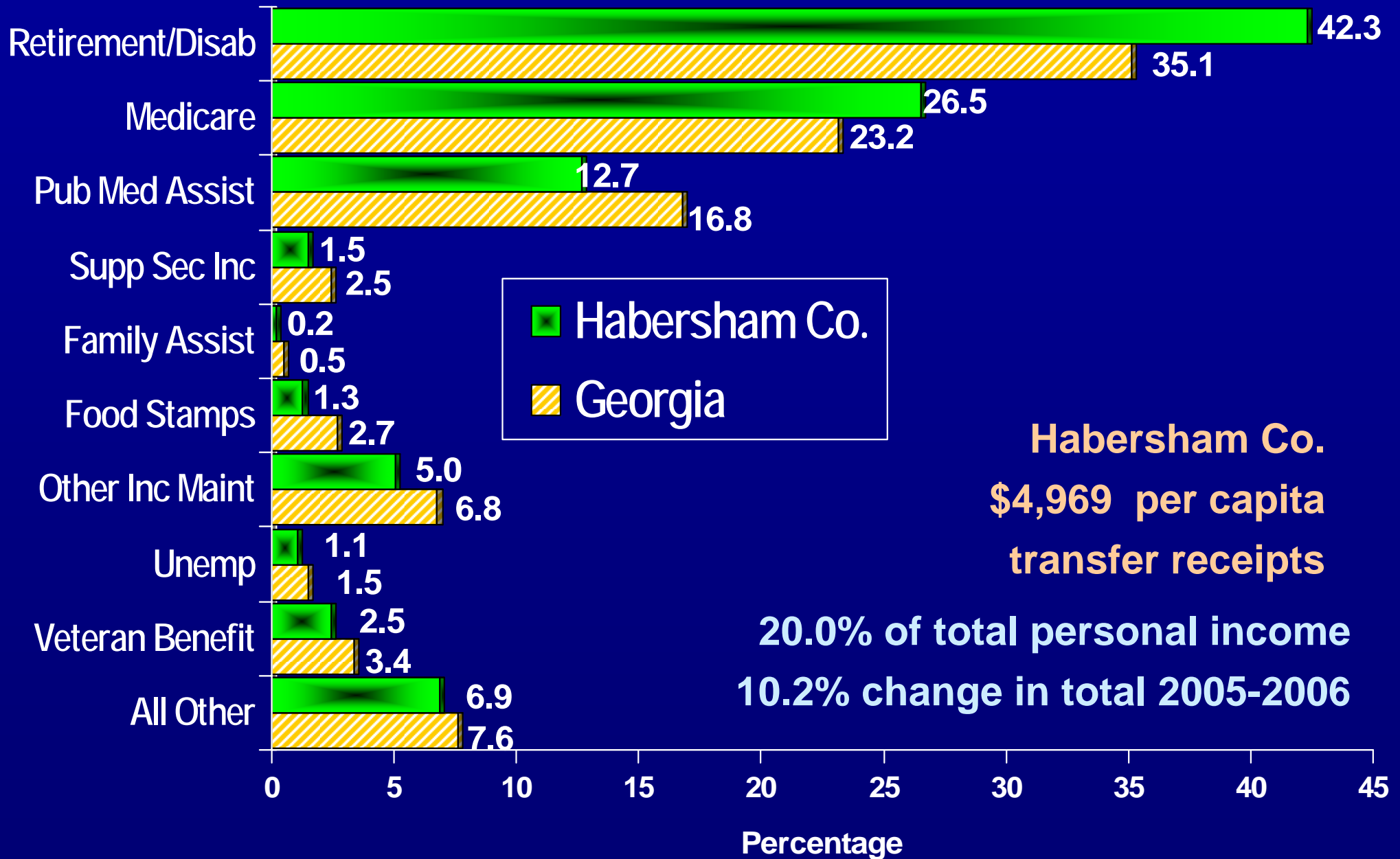
## 2005 Model-Based Estimates



Primary data source: U. S. Census Bureau (1/08)

# Transfer Receipts: 2006

## Habersham Co. Total = \$203,229,000



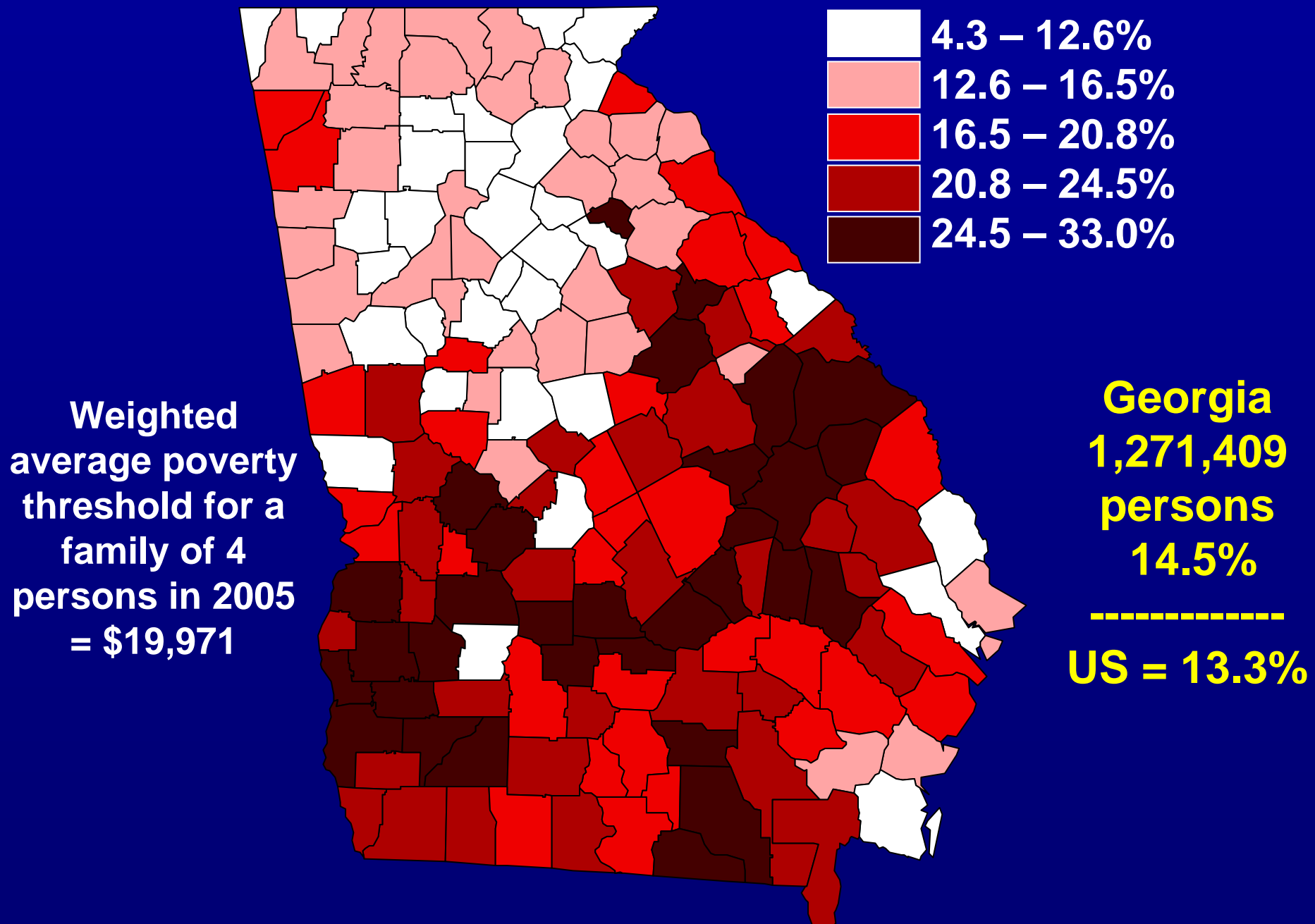
# Persons Living Below Poverty Level

## 2005 Model-Based Estimates

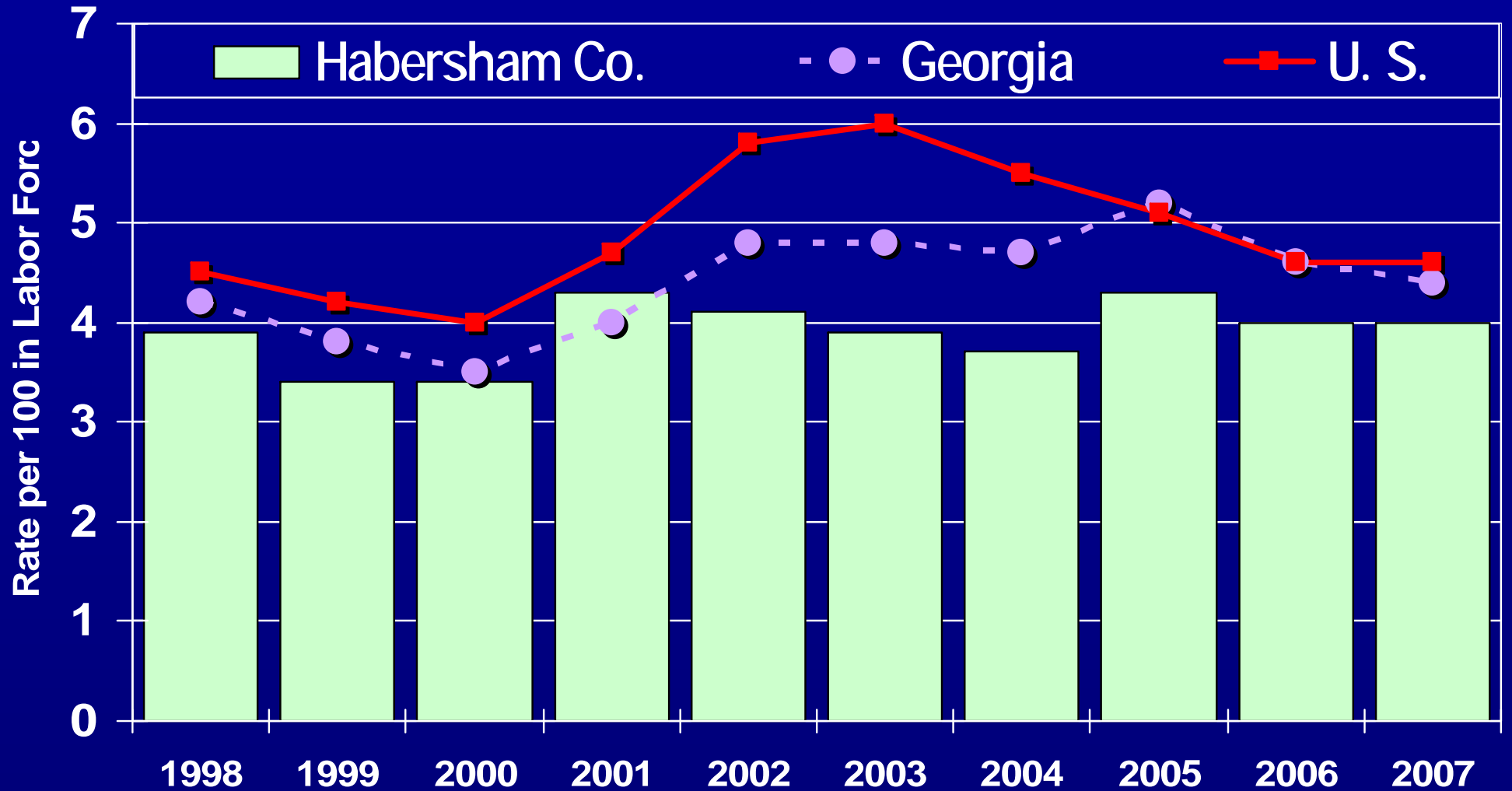
County	# of Persons	% of all Persons	Rank of %
HABERSHAM	4,345	11.5	27
BANKS	2,120	13.3	38
HALL	17,516	10.8	21
RABUN	1,972	12.6	32
STEPHENS	4,028	16.7	66
TOWNS	1,187	12.1	29
WHITE	3,128	13.3	40
GA Avg. Co.	7,996	18.7	--



# Persons Living Below the Poverty Level 2005 Model-Based Estimates



# Unemployment Rates



**2007 Rates**

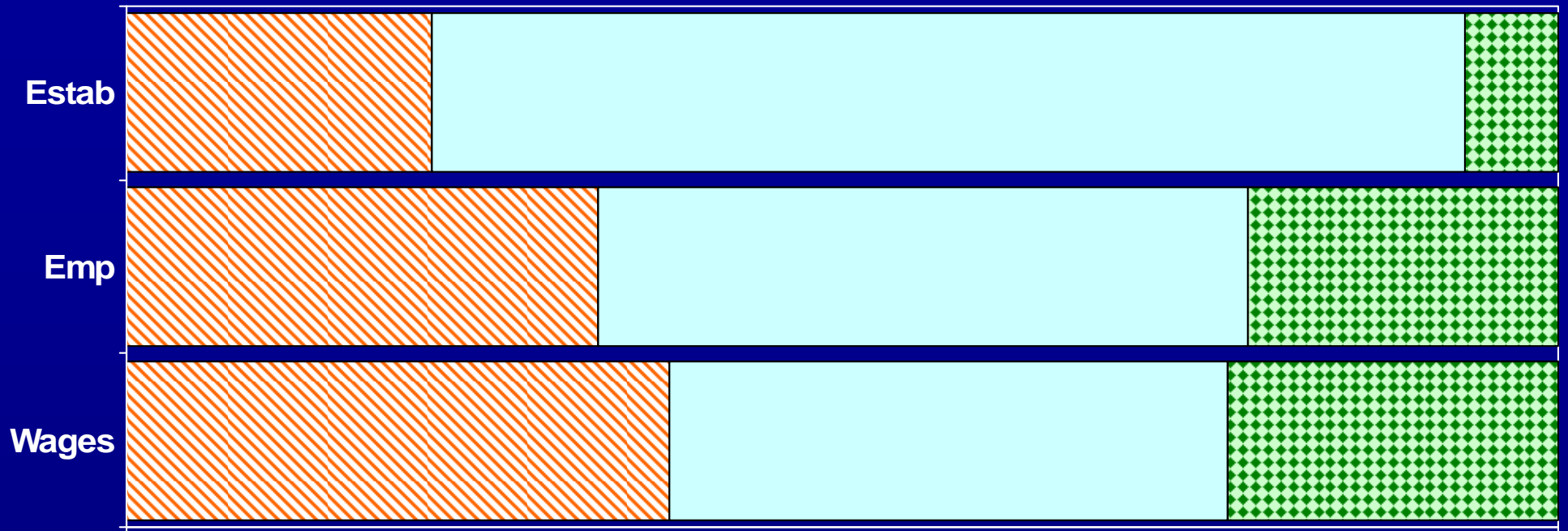
**Habersham Co. = 4.0**

**GA = 4.4**

**US = 4.6**

**Avg. GA County = 4.9**

# Business Establishments, Employment and Wages Habersham Co. 2007 Annual Averages, % of Total



 Goods Producing

 Service Producing

 Government

**Agriculture, Mining,  
Construction,  
Manufacturing**

**Retail-Wholesale Trade, Transportation-Warehousing,  
Information, Finance-Insurance-Real Estate,  
Professional-SciTech Serv., Admin-Waste Serv., Health-  
Social Serv., Accommodation-Food Serv., & others**

**Federal,  
State,  
Local**

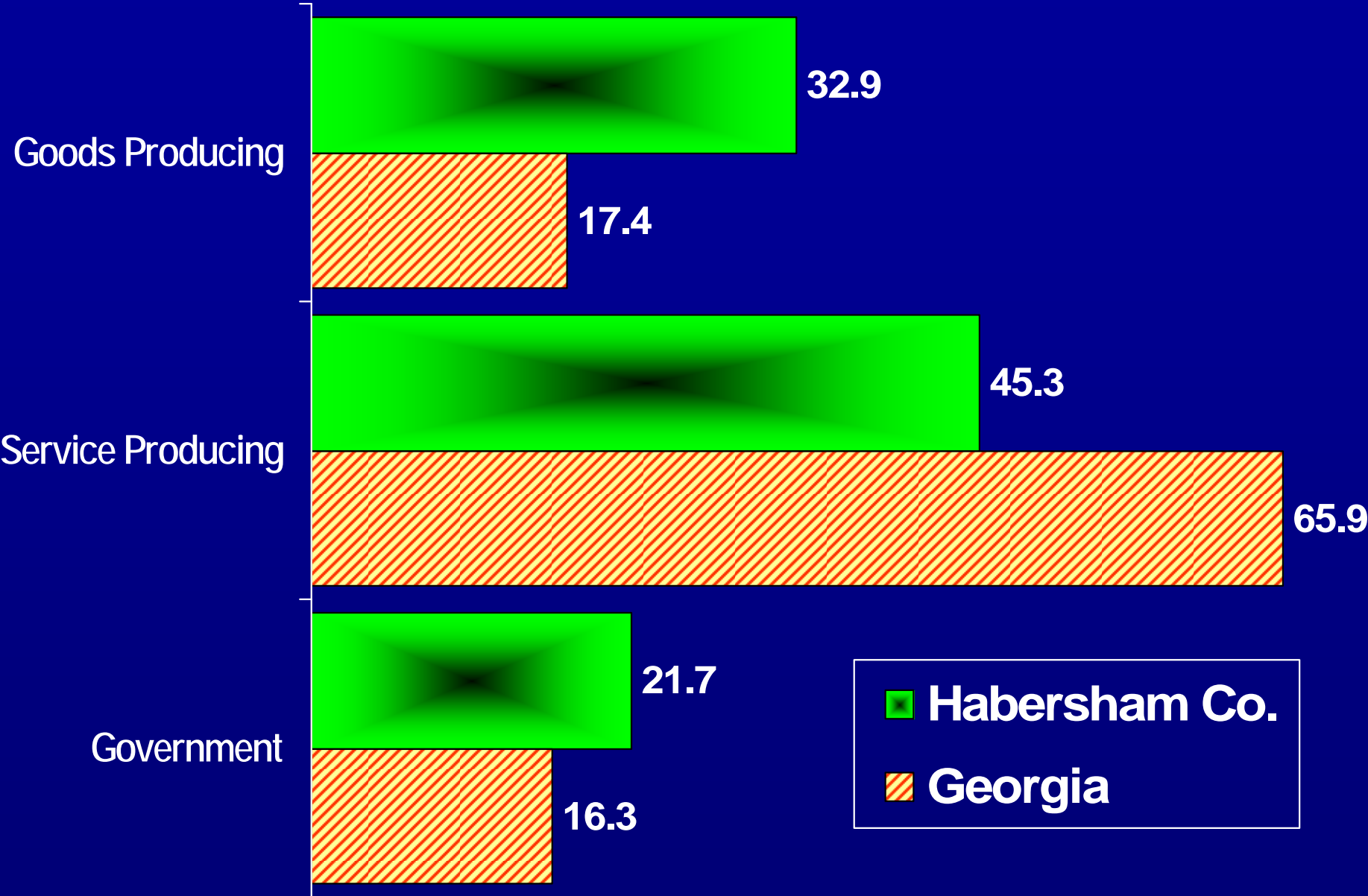
## 2007 Averages

**# Estab. = 925**

**Monthly Employment = 14,259**

**Weekly Wage = \$570**

# Employment Comparisons by Major Sectors: 2007

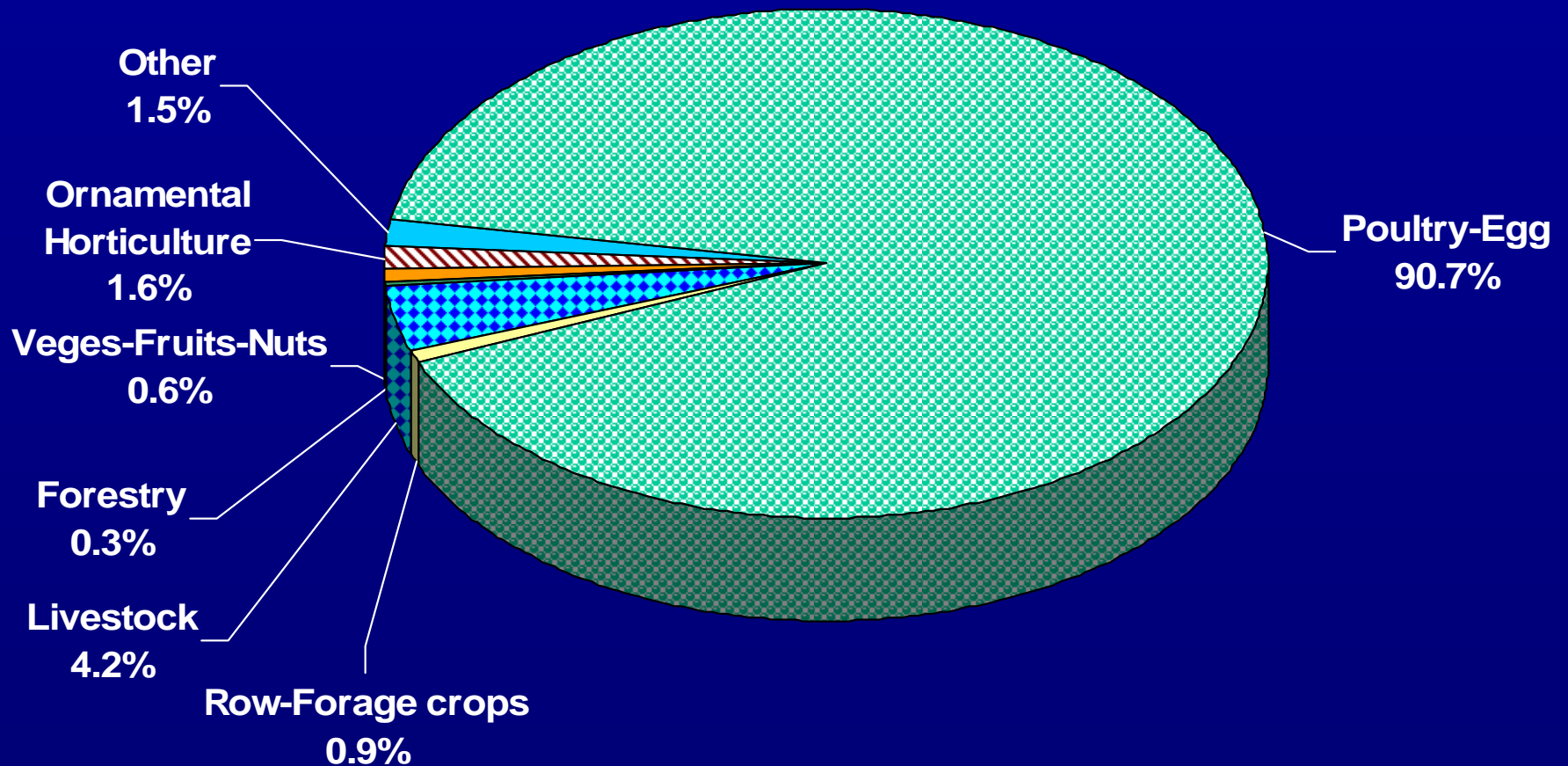


Primary data source: GA Dept. of Labor

# Farm Gate Value by Commodity Group: 2007

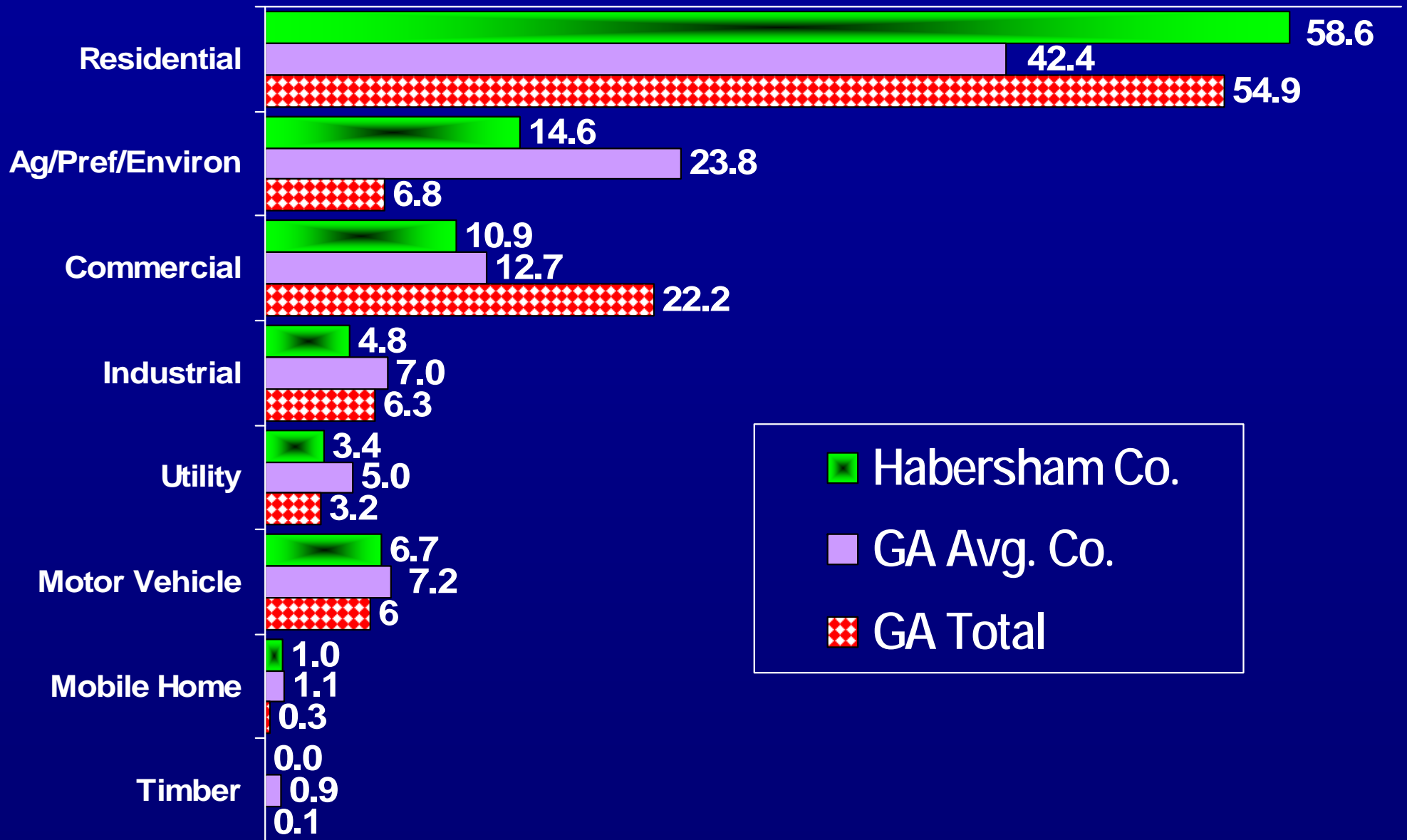
## Habersham Co. Total Value = \$298,739,545

---



# Components of Gross Property Tax Digest: 2007

## Habersham Co. Gross Digest (40% Value) = \$1.422 Billion



Primary data source: GA Dept. of Revenue

# County Property Tax Digest Comparisons: 2007

County	% Residential	% Agricultural	% Commercial	% Industrial	% Utility	% Motor Veh	% Mobile Home	% Timber
HABERSHAM	58.6	14.6	10.9	4.8	3.4	6.7	1.0	0.01
BANKS	36.6	35.9	12.6	3.6	3.2	6.7	1.2	0.04
HALL	56.3	7.3	16.6	11.3	1.7	6.4	0.4	0.002
RABUN	57.1	6.5	5.7	1.8	25.6	2.9	0.3	0.0
STEPHENS	56.7	6.4	13.2	11.6	3.7	7.2	1.1	0.05
TOWNS	78.4	8.0	8.1	0.1	1.1	3.8	0.5	0.0
WHITE	57.0	23.1	9.8	1.2	1.8	6.1	0.8	0.005
Avg. GA Co.	42.4	23.8	12.7	7.0	5.0	7.2	1.1	0.9

# Millage Rates, Taxes Levied, & Sales Tax Rate

County	'07 County-wide Millage*	'07 School Millage*	'07 Taxes Levied* (\$000)	Sales Tax Rate as of 10/08	LOST Type* as of 10/08
HABERSHAM	22.847	13.600	\$30,566	7	LSE
BANKS	20.298	11.744	\$10,949	7	LSE
HALL	23.770	15.750	\$164,729	7	LSE
RABUN	17.690	8.940	\$30,064	7	LSE
STEPHENS	28.400	18.400	\$20,541	7	LSE
TOWNS	8.537	3.633	\$7,702	7	LEO
WHITE	22.680	14.240	\$24,047	7	LSE

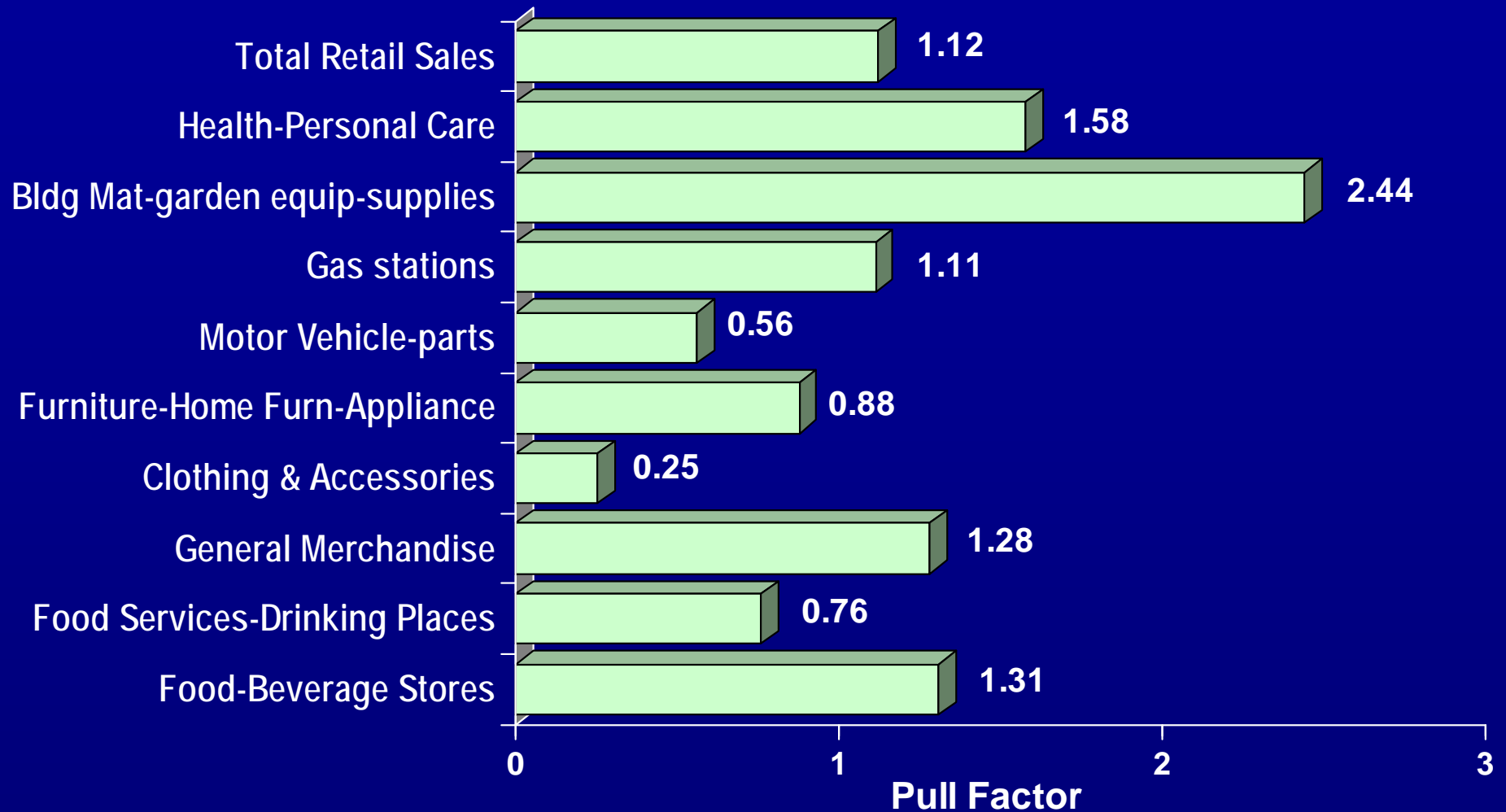
\*Countywide Includes .250 state millage. School includes bonds, if any. Taxes levied, but not necessarily collected. L=Local Option Sales Tax, S=Special Purpose, E=Educational, O=Other Local Option

Primary data source: GA Dept. of Revenue



# Retail Sales Analysis: 2007

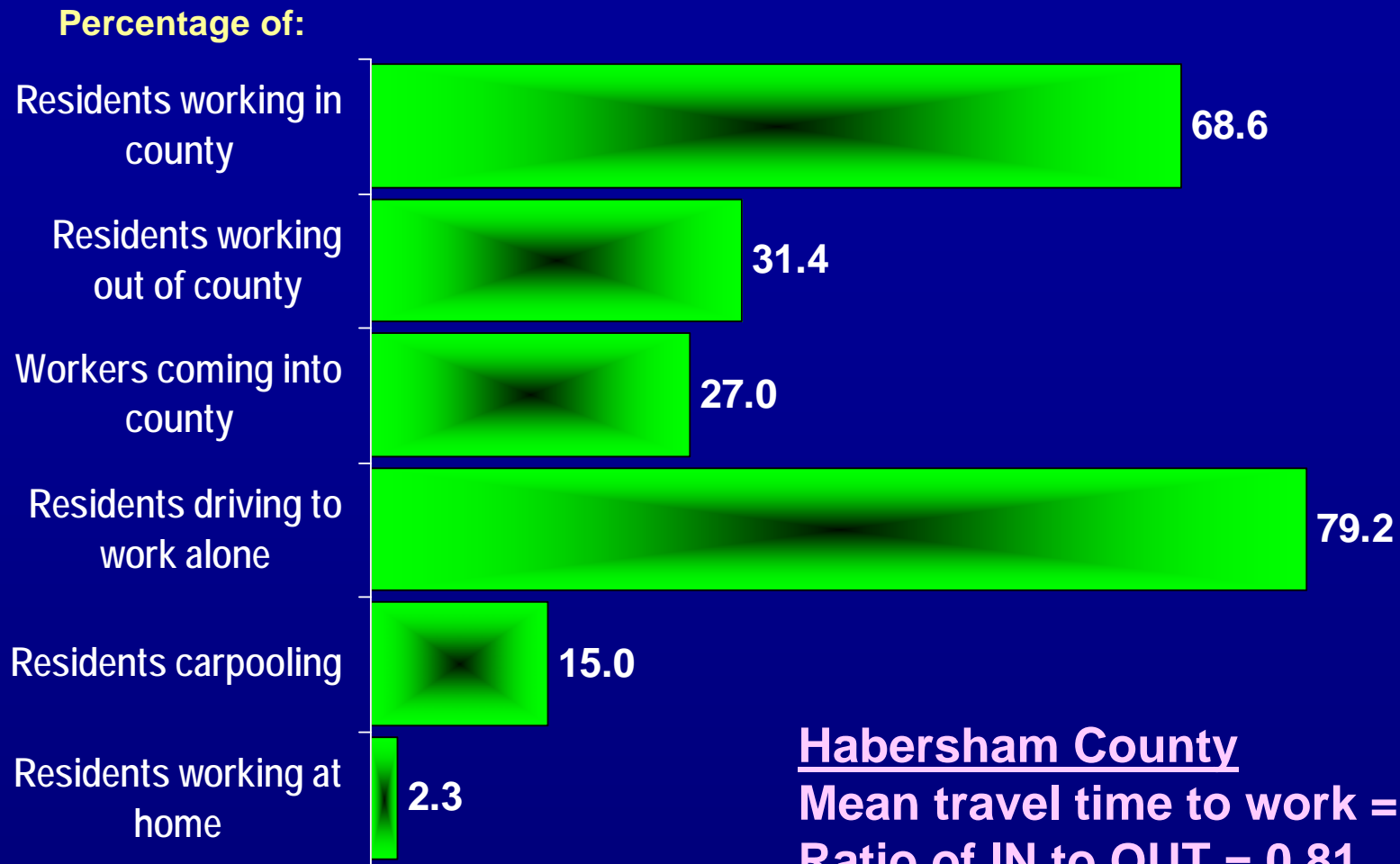
## Habersham Co. Total Retail Sales = \$605,609,000



**A “pull factor” of 1.0 means that the county’s sales are what would be expected based upon the number of residents and their relative wealth.**

Primary data sources: “Demographics USA, County Edition, 2007;” pull factor calculations by Center for Agribusiness and Economic Development.

# Commuting to Work: 2000



Habersham County  
Mean travel time to work = 23.8 min.  
Ratio of IN to OUT = 0.81

Resident workers 16+ = 16,482  
Residents working in county = 11,308  
Residents working out of county = 5,174  
Total working in county = 15,492  
Workers commuting into county = 4,184

*This study was developed to assist  
community leadership with their  
future planning and decision making.*

***Special Area Report***

**# 0833**

**December 2008**



---

***Prepared for Habersham County Cooperative Extension  
by Susan R. Boatright***

***Center for Agribusiness and Economic Development***

***College of Agricultural and Environmental Sciences***

***The University of Georgia • Athens, GA***

***Georgia Cooperative Extension***

***706-542-0760 • 706-542-8938***

***To learn more about your county, click on  
“Georgia Statistics System” at our website:***

***[www.caed.uga.edu](http://www.caed.uga.edu)***