

Jasper County Community Profile

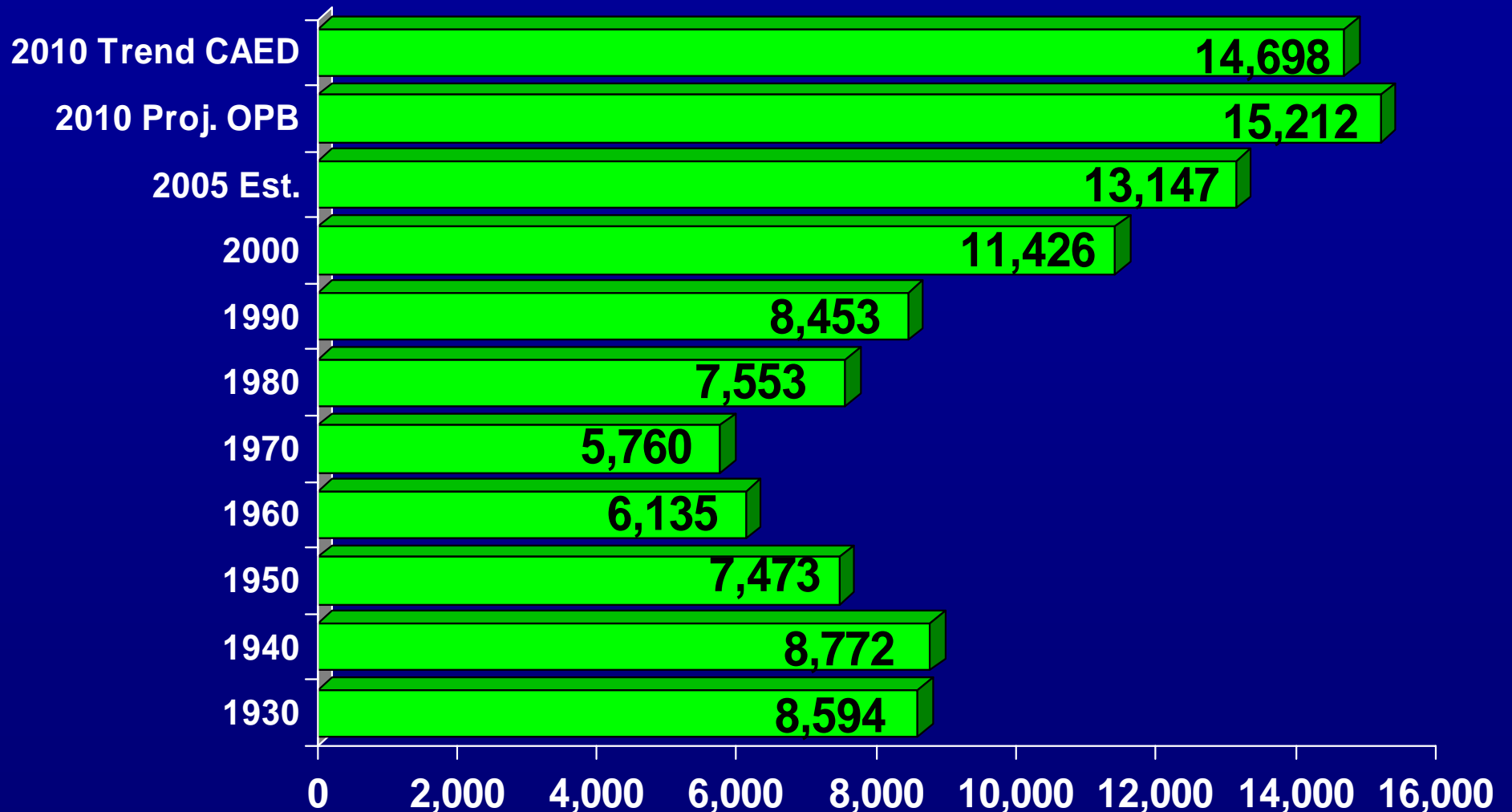


Photo: Ed Jackson

31st in order
of county creation
December 10, 1807

Prepared for Jasper County Cooperative Extension
by the Center for Agribusiness and Economic Development
The University of Georgia • Athens, GA

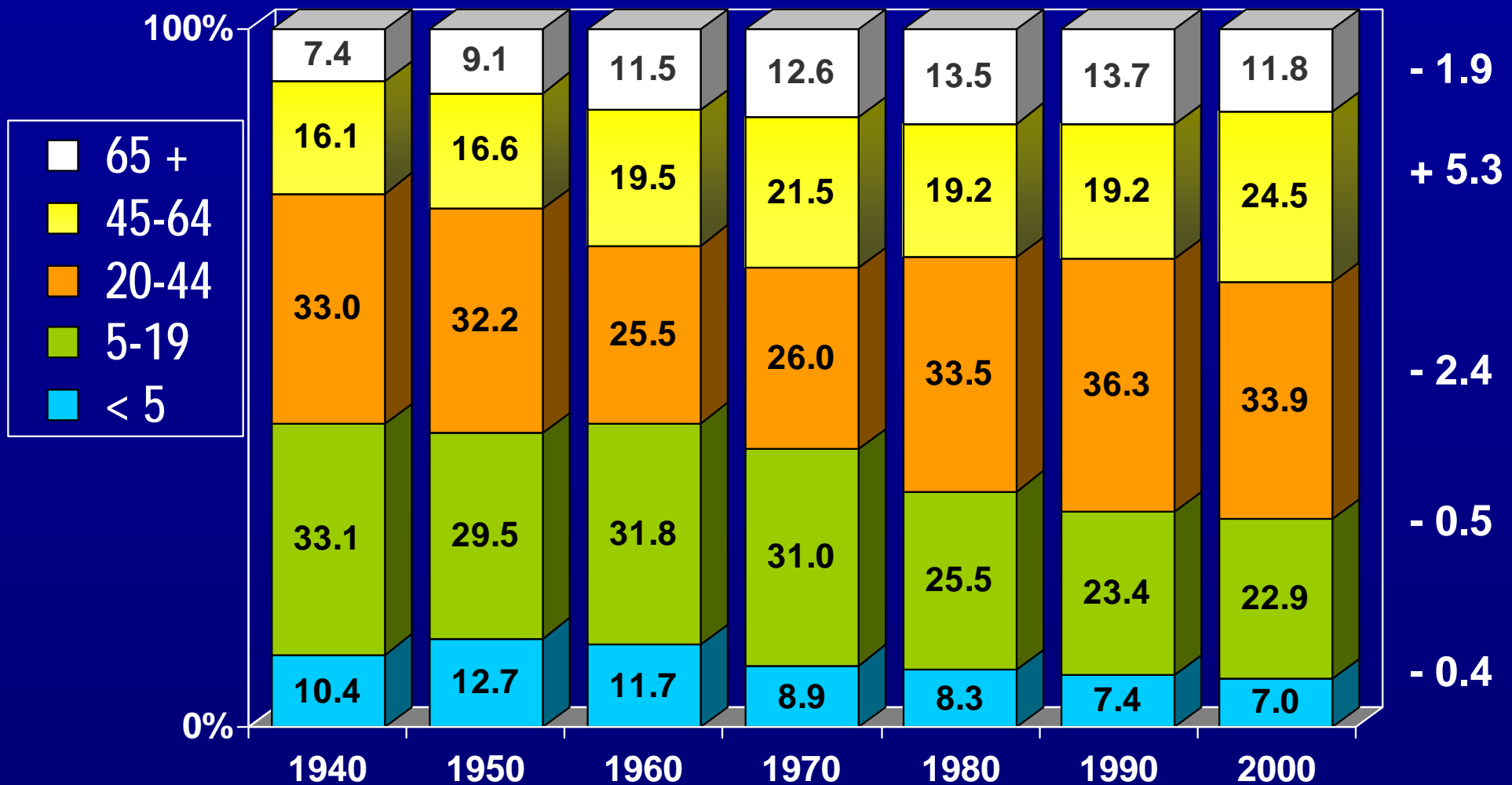
Total Population Jasper County



Primary data sources: U.S. Census Bureau, decennial censuses & estimate; CAED (Center for Agribusiness & Economic Development); OPB (State Office of Planning & Budget).

Population Composition by Age Jasper County

Change in
proportion
1990-2000



2005 Estimated Median Age

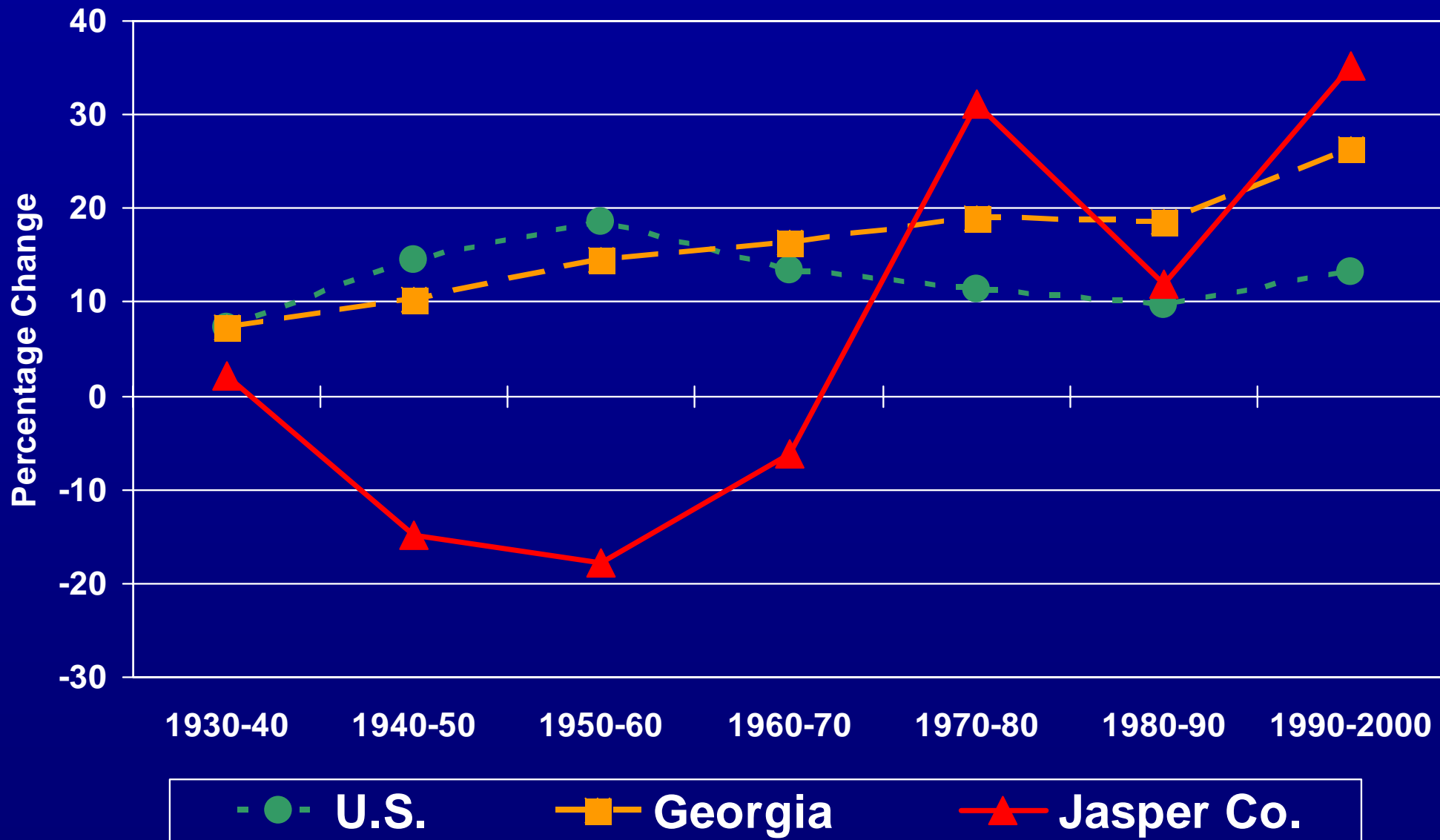
Jasper Co. = 35.0 yrs.

GA = 34.0 yrs.

2005 County Population Comparisons

County	Total	Total Rank	Density per sq.mi. land area	% Chg. 2000-05	Rank of % Chg.
JASPER	13,147	111	35.5	15.1	26
BUTTS	21,045	84	112.8	8.0	56
JONES	26,836	65	68.2	13.5	32
MONROE	23,785	74	60.1	9.2	50
MORGAN	17,492	92	50.0	13.2	36
NEWTON	86,713	27	313.7	39.9	3
PUTNAM	19,829	87	57.6	5.4	74

Population Change: 1930-2000



Primary data source: U.S. Census Bureau

Components of Population Change: 2000-2005

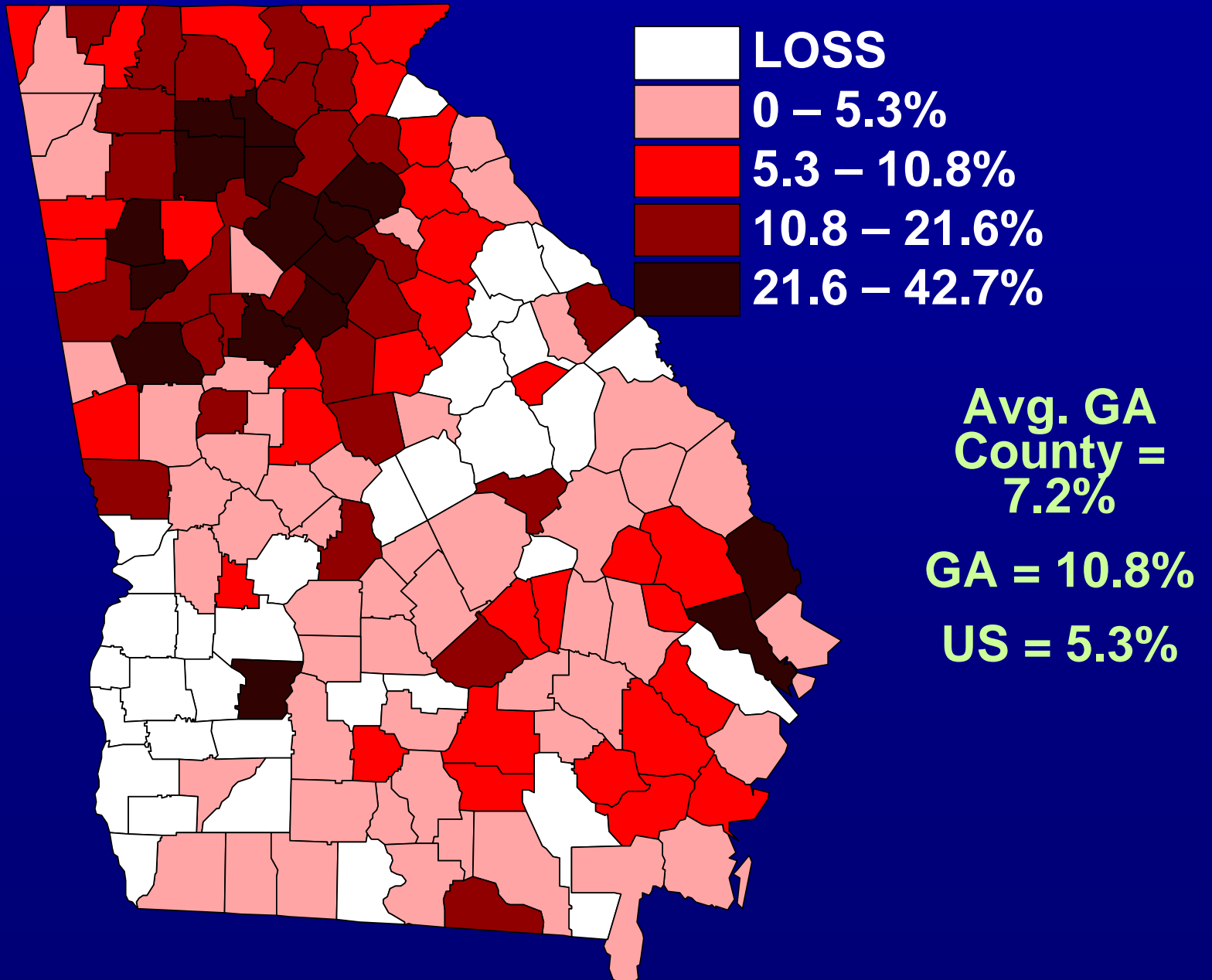
Natural Increase & Net Migration*

Area	Numerical Change	# Natural Increase (Births-Deaths)	Rate of Natural Increase	# Net Migration	Rate of Net Migration
JASPER	1,721	322	5.0	1,421	22.0
BUTTS	1,522	602	5.7	945	8.9
JONES	3,197	661	5.0	2,572	19.4
MONROE	2,011	469	3.9	1,579	13.2
MORGAN	2,035	376	4.3	1,681	19.4
NEWTON	24,712	4,055	10.4	20,811	53.3
PUTNAM	1,017	466	4.6	594	5.9
Avg. GA Co.	5,571	2,365	4.8	2,676	7.7
GEORGIA	885,760	376,105	8.3	425,510	9.4

Primary data source:
U. S. Census Bureau

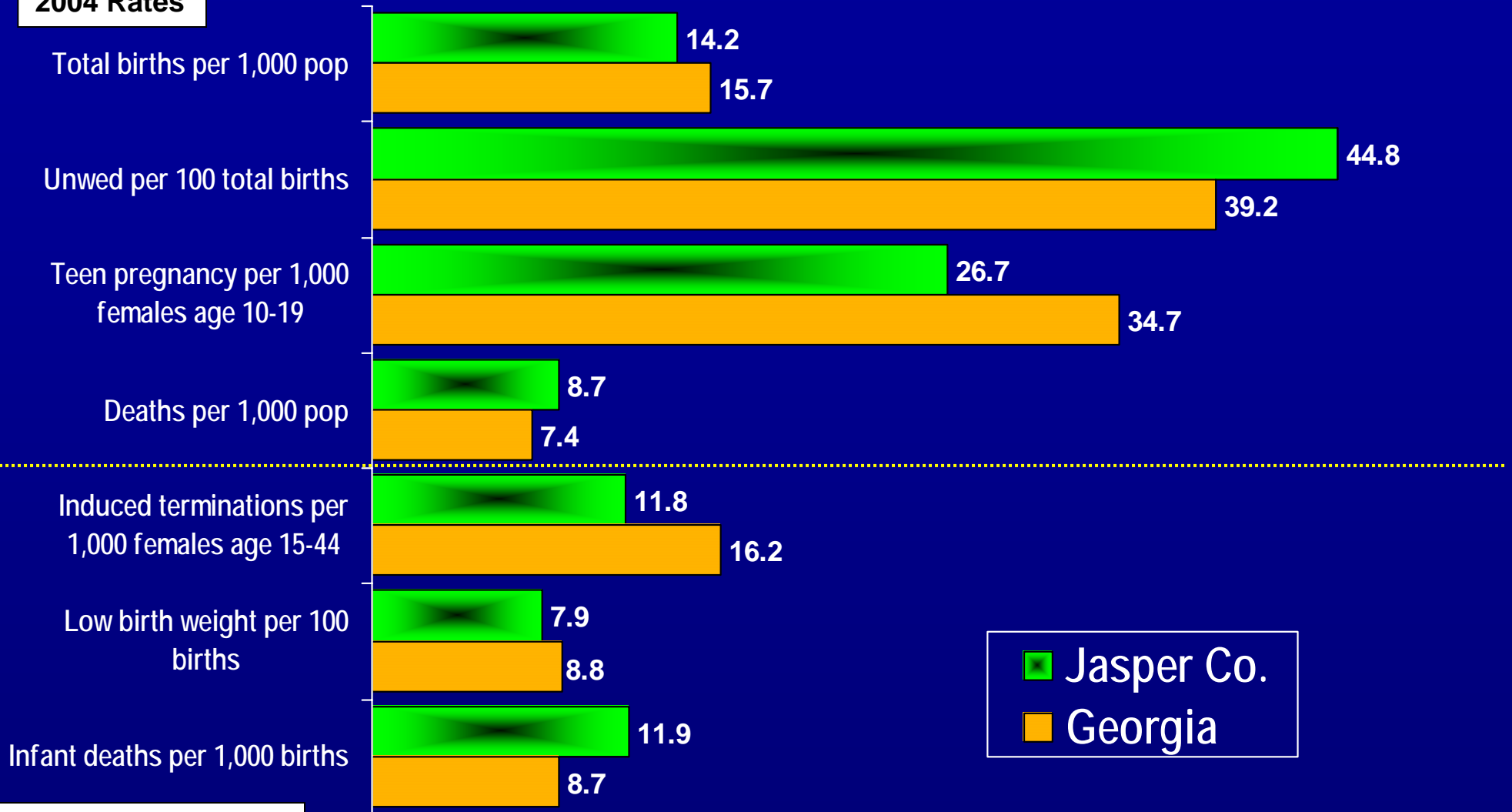
* Numerical change includes "residual" not represented in either NI or NM.
Average annual estimates of annual rates per 1,000 population

Population Change: 2000-2005



Selected Vital Statistics

2004 Rates

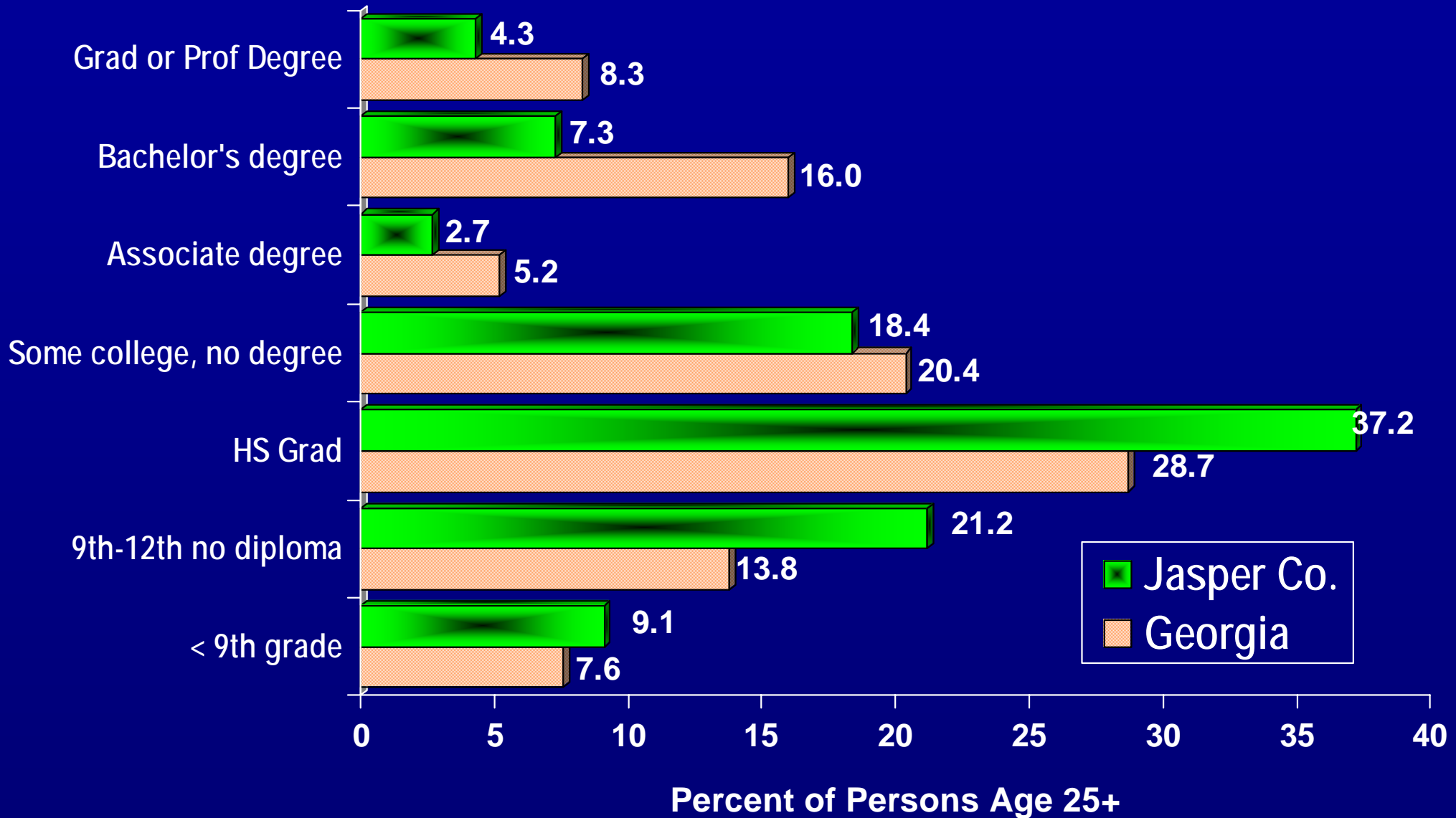


10-yr. rates 1995-2004

2004 Jasper Co. Natality Data
 183 total births, 82 unwed births
 17 induced terminations
 25 teen pregnancies
 11 low birth weight babies

2004 Jasper Co. Mortality Data
 112 total deaths
 2 infant deaths

Highest Level of Educational Attainment: 2000



Jasper Co.

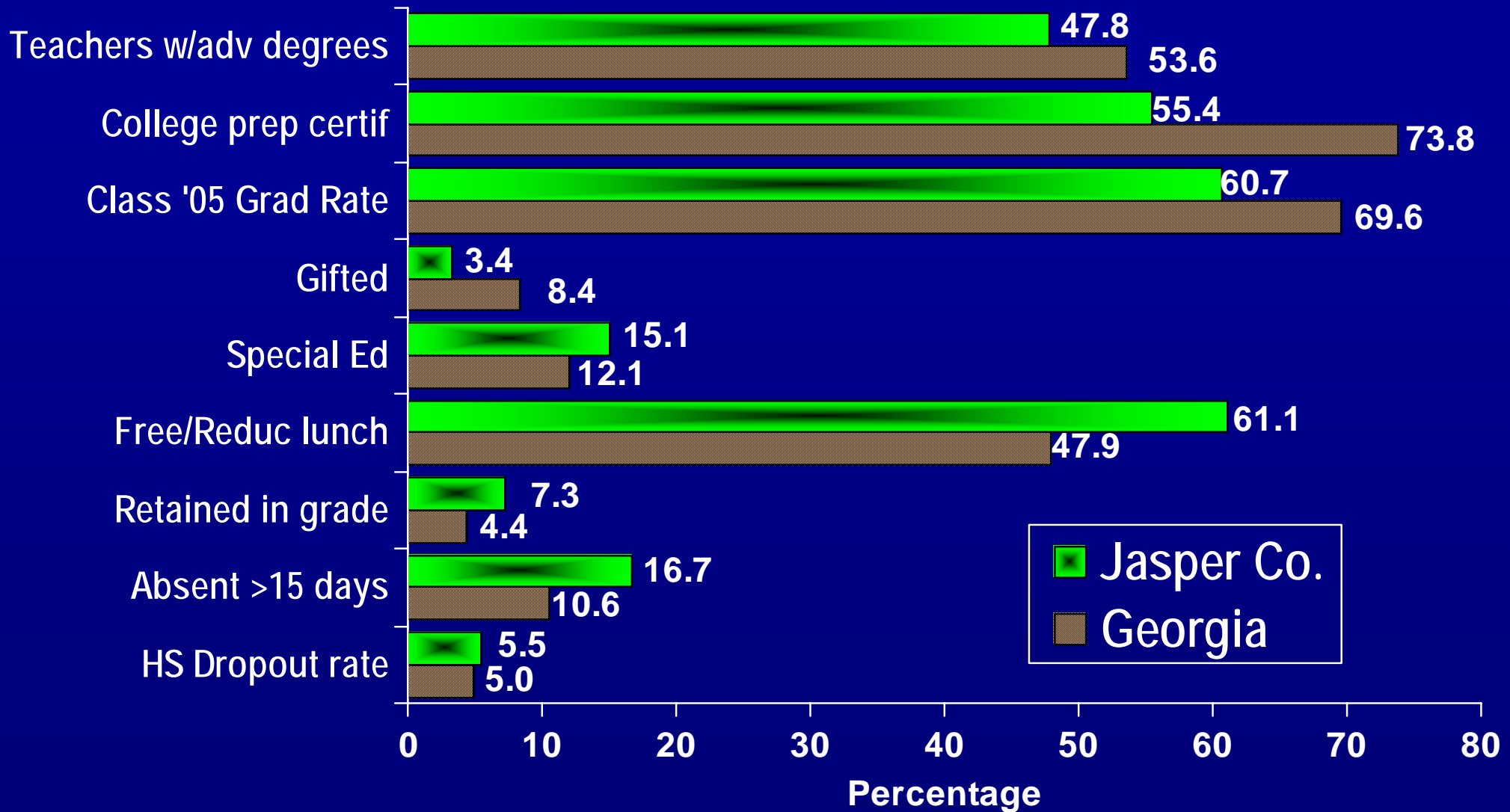
Not completing HS = 30.3%

With a bachelor's + degree = 11.5%

Primary data source: U.S. Census Bureau

Selected Public School Statistics

School Year 2004-05



Jasper Co.

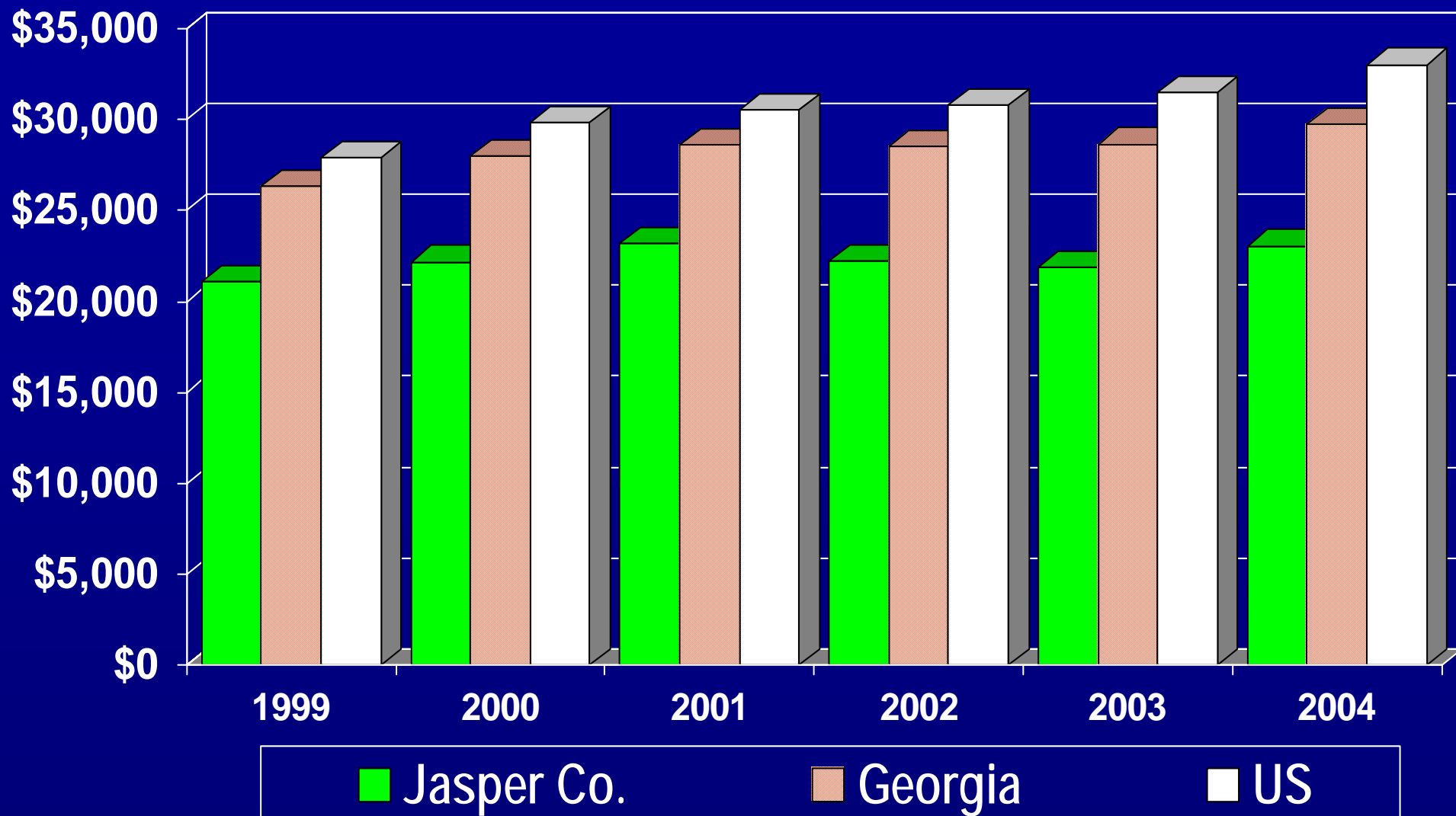
K12 enrollment = 1,910

HS dropouts = 31

General Fund Expenditures per FTE = \$6,391

Primary data source:
Governor's Office of Student Achievement

Per Capita Income: 1999-2004

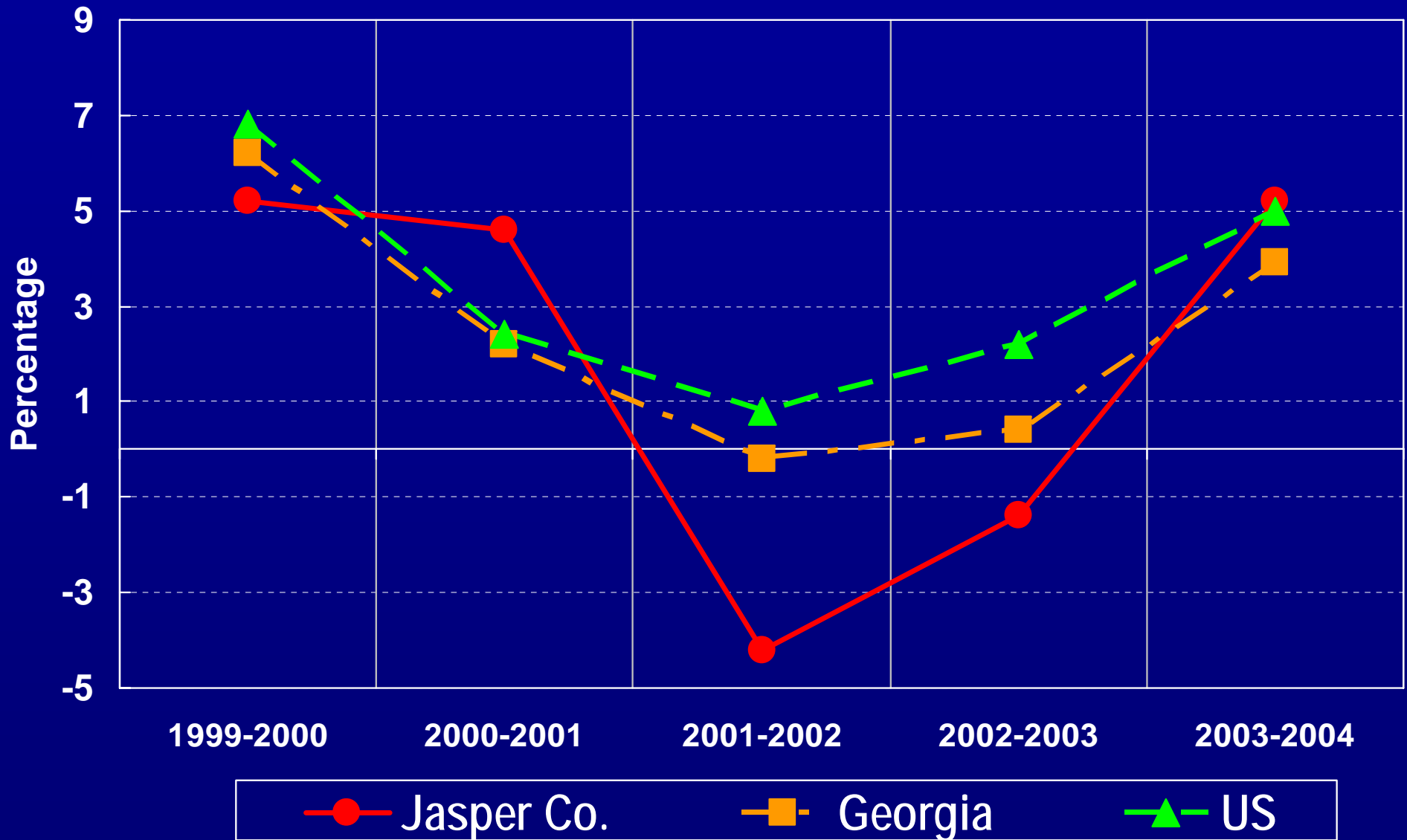


2004 PCI
Jasper Co. = \$23,056

Georgia = \$29,782
US = \$33,050

Per Capita Income: 1999-2004

Percentage Change

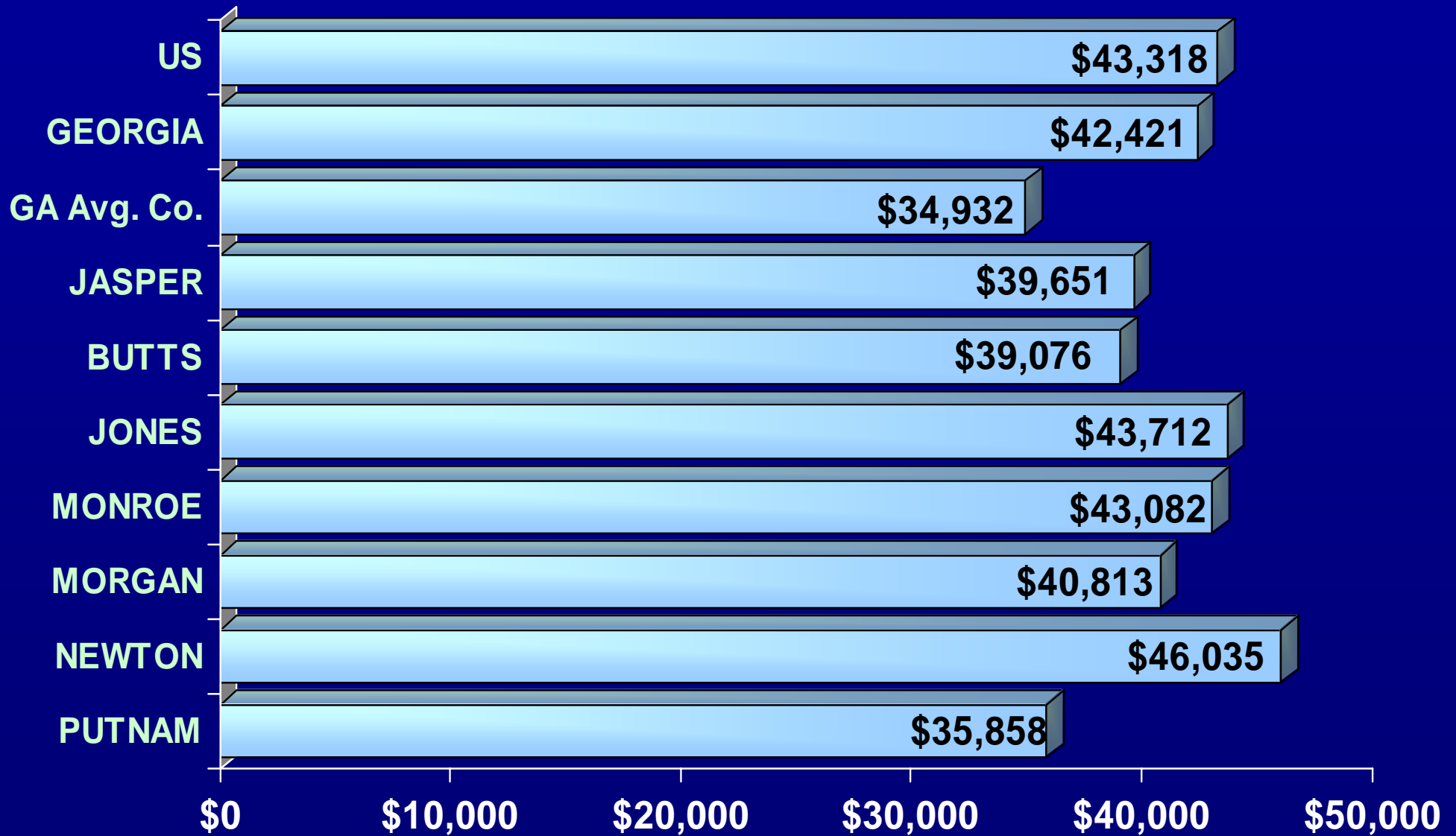


Per Capita Income: 2004

County	PCI	Rank of PCI	% PCI of GA Total	% Change in PCI 1999-2004
JASPER	\$23,056	76	77.4	9.4
BUTTS	\$24,683	45	82.9	19.7
JONES	\$24,439	49	82.1	9.6
MONROE	\$26,350	28	88.5	16.1
MORGAN	\$29,050	16	97.5	17.0
NEWTON	\$22,634	85	76.0	2.8
PUTNAM	\$26,070	30	87.5	18.5
GA Avg. Co.	\$23,588	--	79.2	14.6

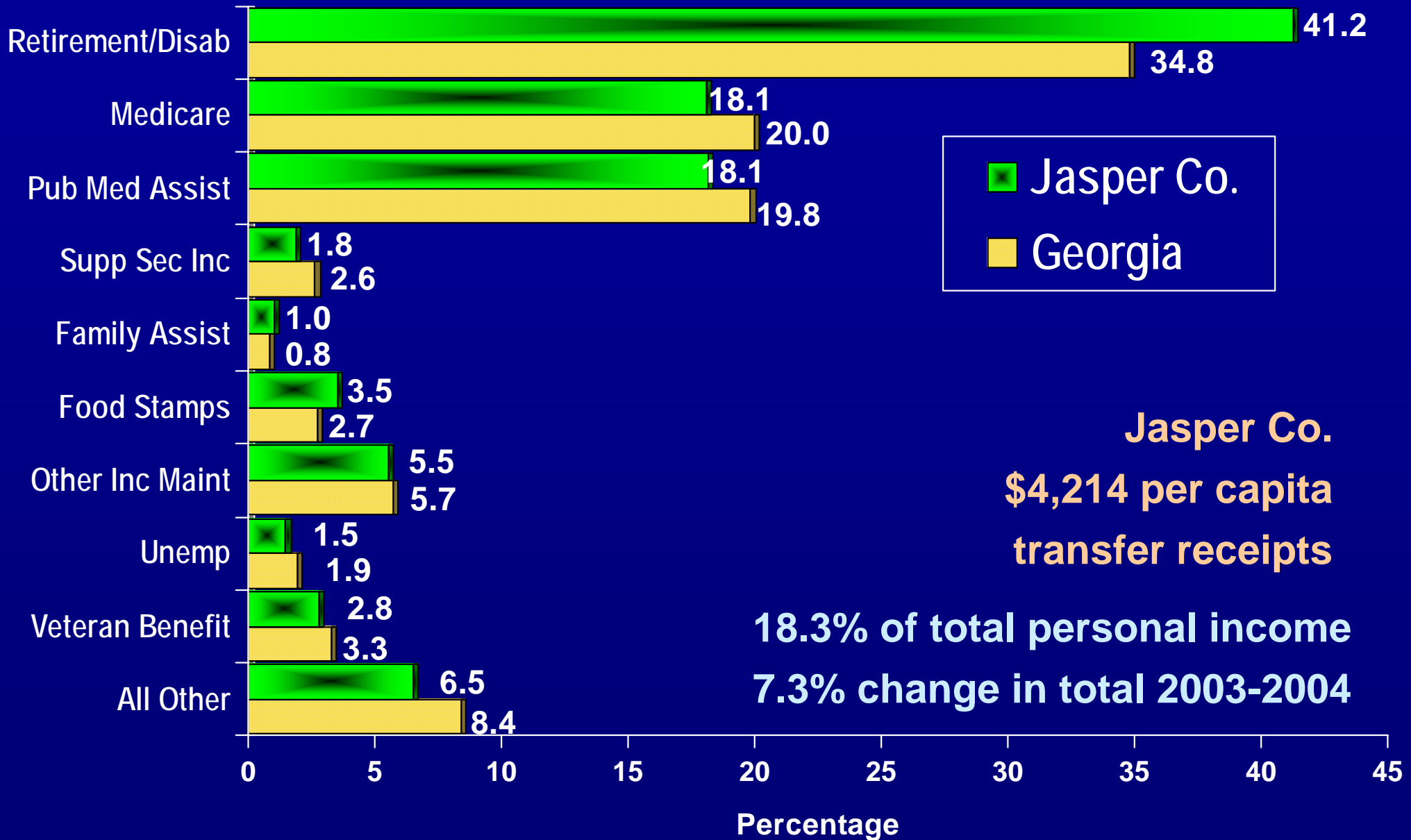
Median Household Income

2003 Model-Based Estimates



Transfer Receipts: 2004

Jasper Co. Total = \$ 53,845,000



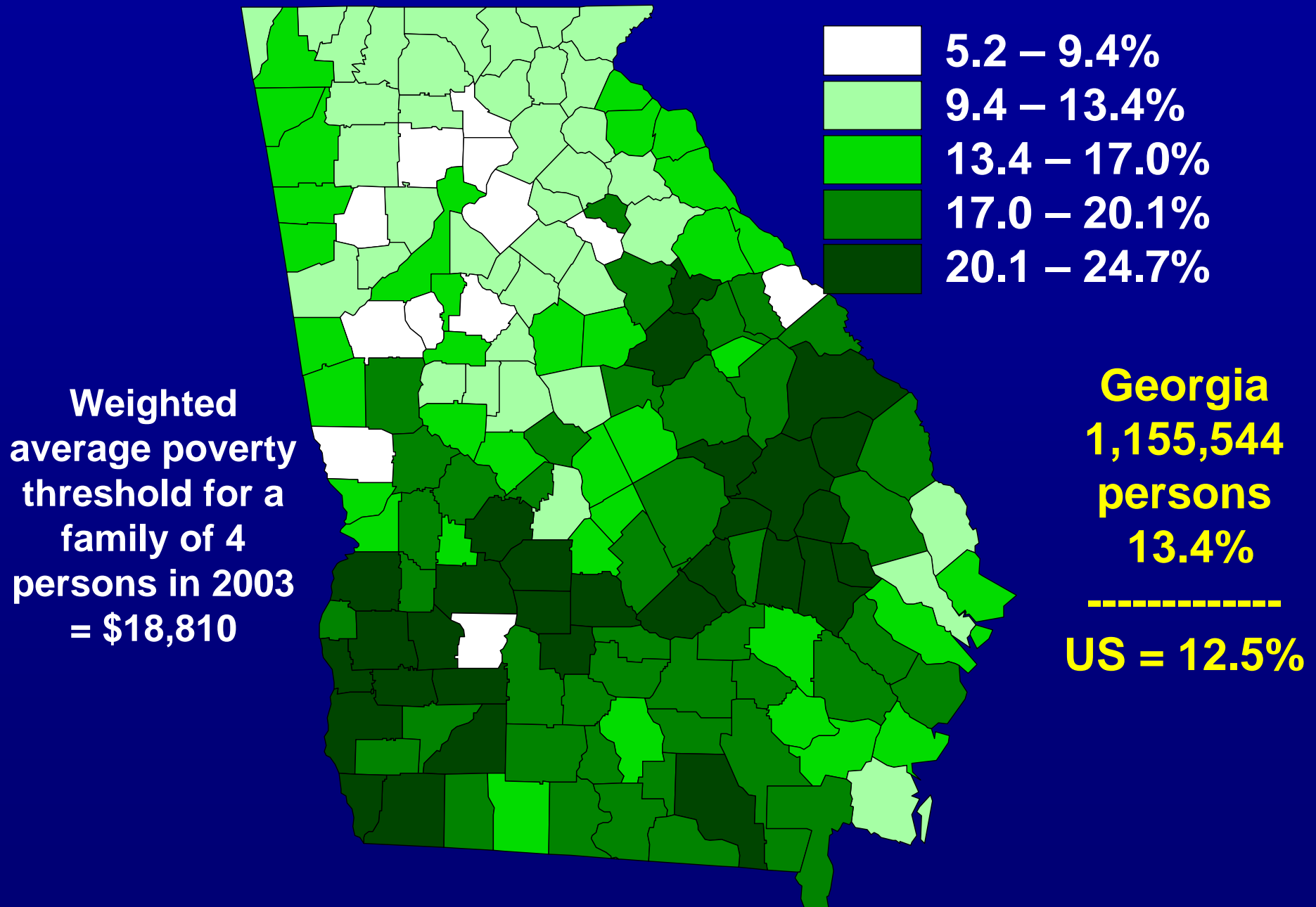
Persons Living Below Poverty Level

2003 Model-Based Estimates

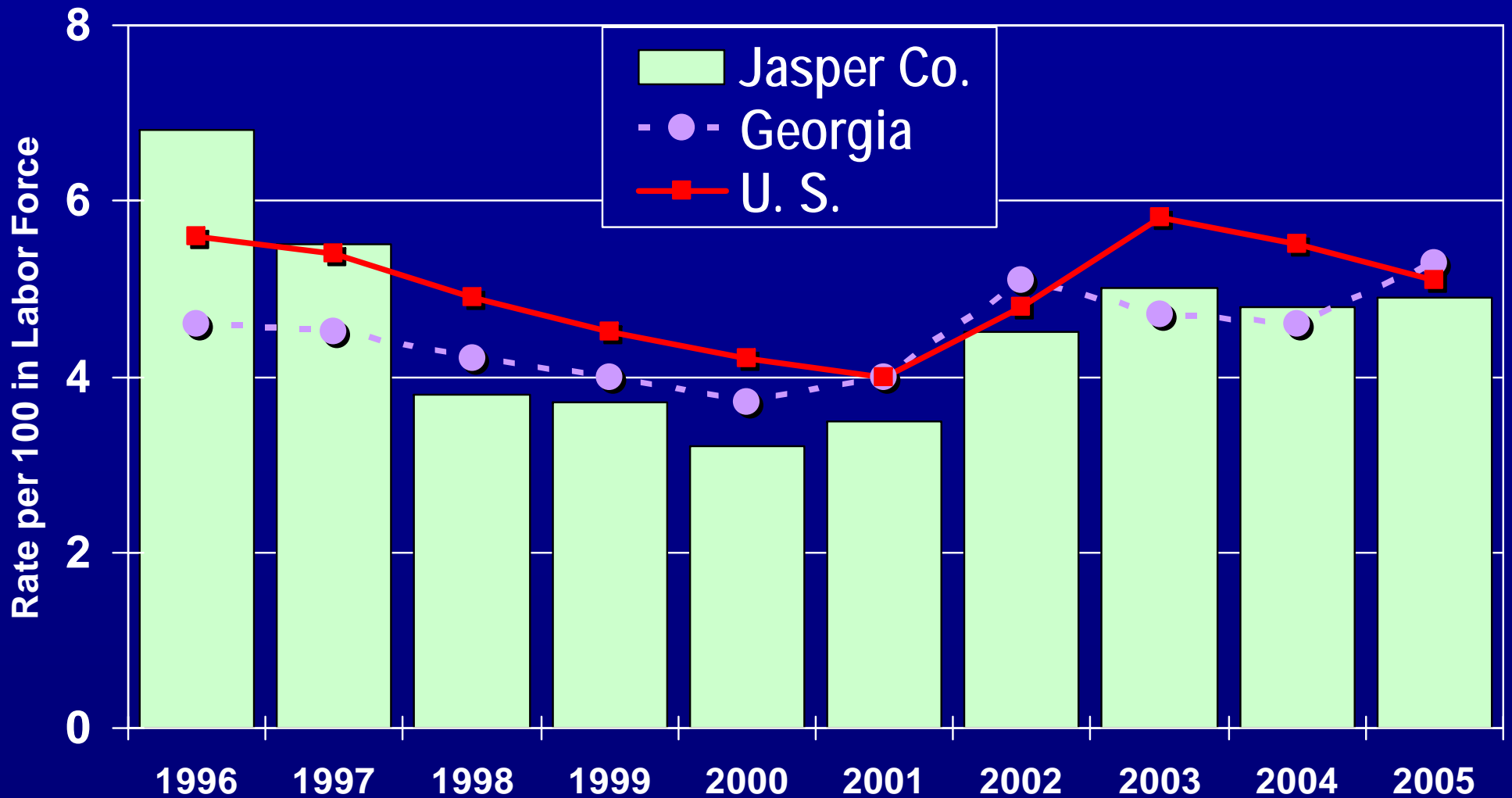
County	# of Persons	% of all Persons	Rank of %
JASPER	1,763	13.8	53
BUTTS	2,559	12.5	41
JONES	2,781	10.7	22
MONROE	2,640	11.6	28
MORGAN	2,036	12.1	33
NEWTON	8,969	11.1	26
PUTNAM	2,671	13.6	51
GA Avg. Co.	7,246	16.0	--

Persons Living Below the Poverty Level

2003 Model-Based Estimates



Unemployment Rates



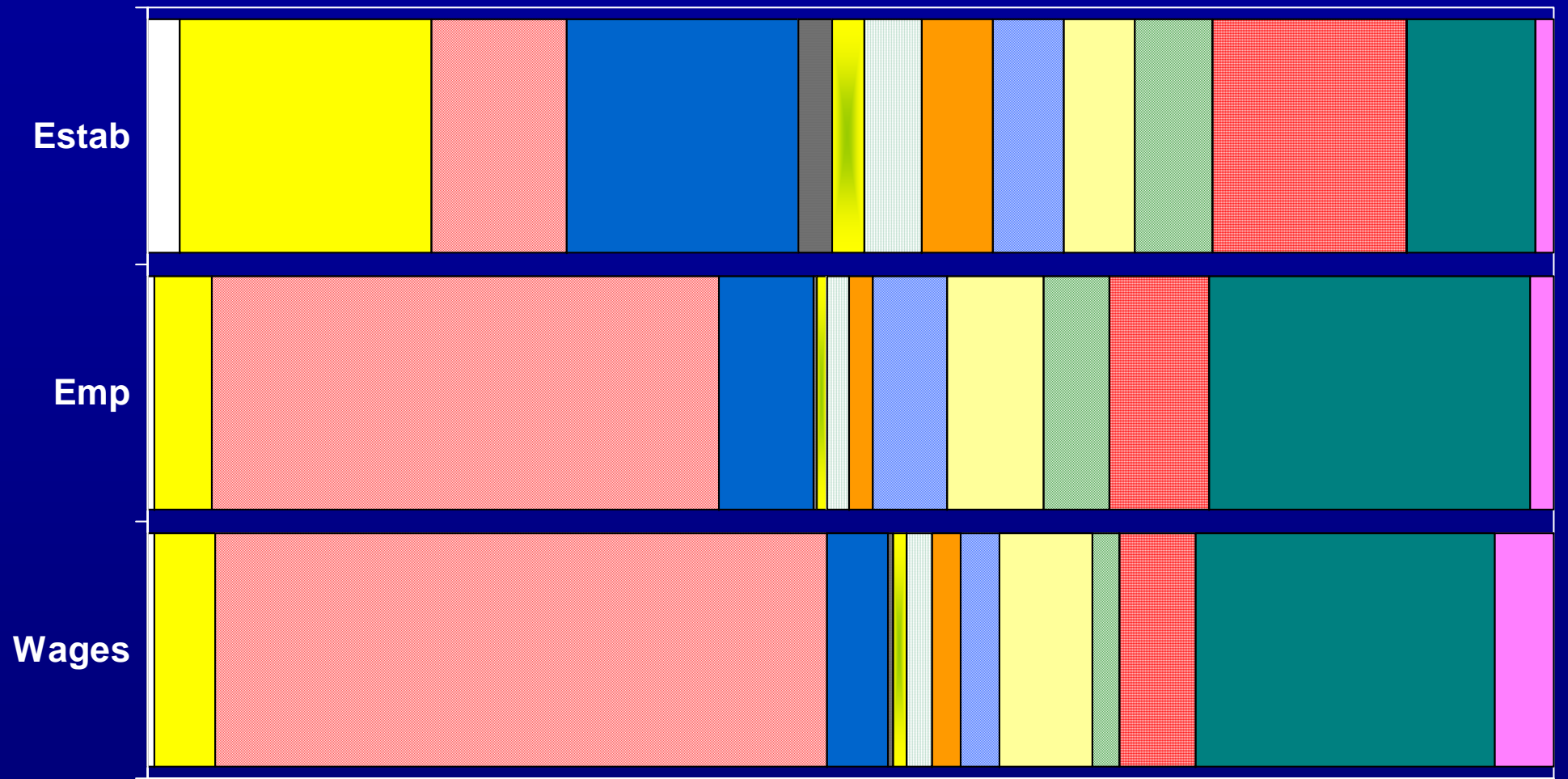
2005 Rates

Jasper Co. = 4.9

GA = 5.3

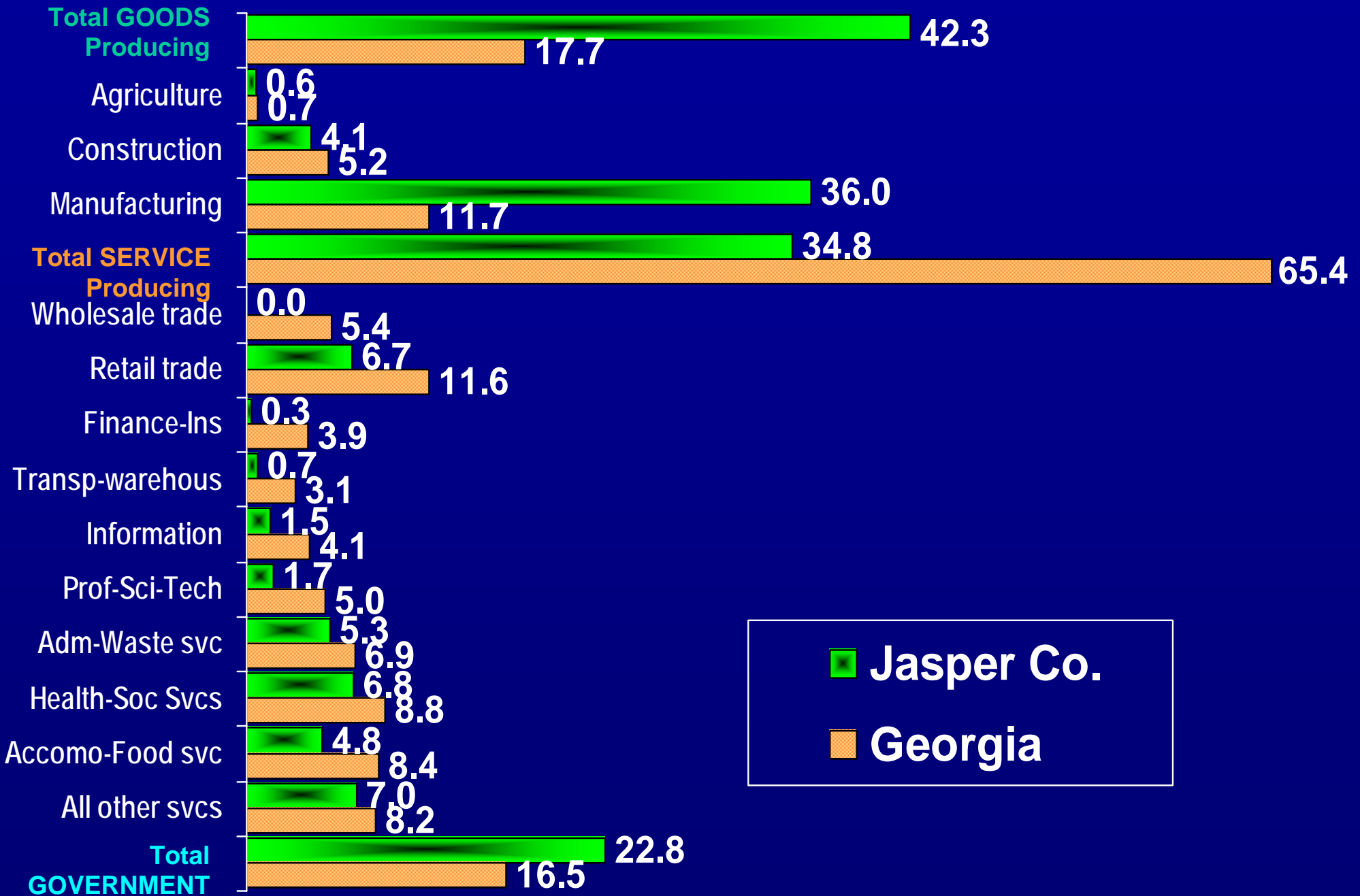
US = 5.1

Business Establishments, Employment and Wages Jasper County 2005 Annual Averages, % of Total



- Agriculture
- Construction
- Manufacturing
- Retail trade
- Transp-warehous
- Information
- Finance/Insur
- Prof-Sci-Tech Svc
- Admin-waste svc
- Health svc
- Accom/Food Svc
- All other svc
- Govt
- All Other

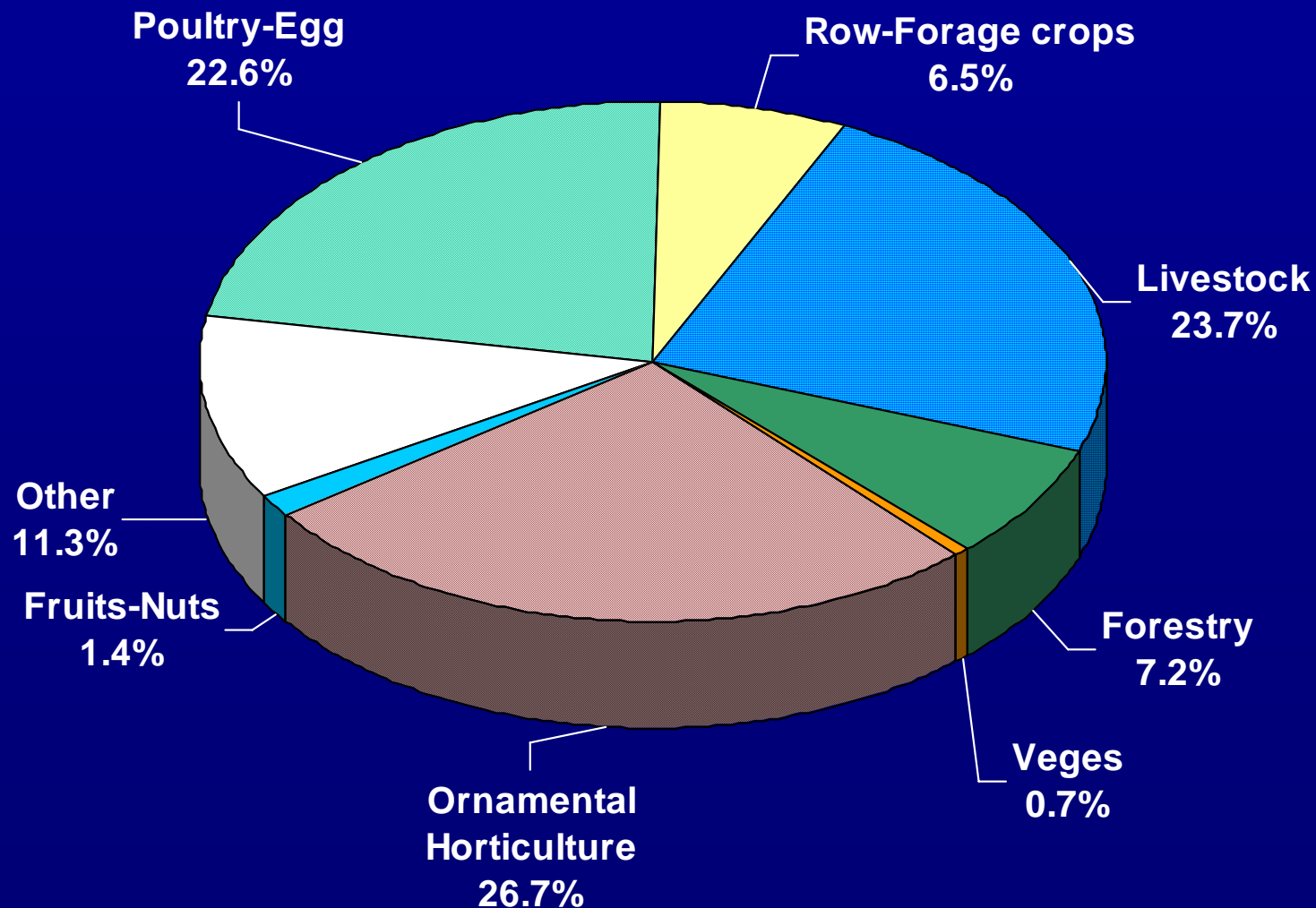
Employment Comparisons by Industry: 2005



Primary data source: GA Dept. of Labor

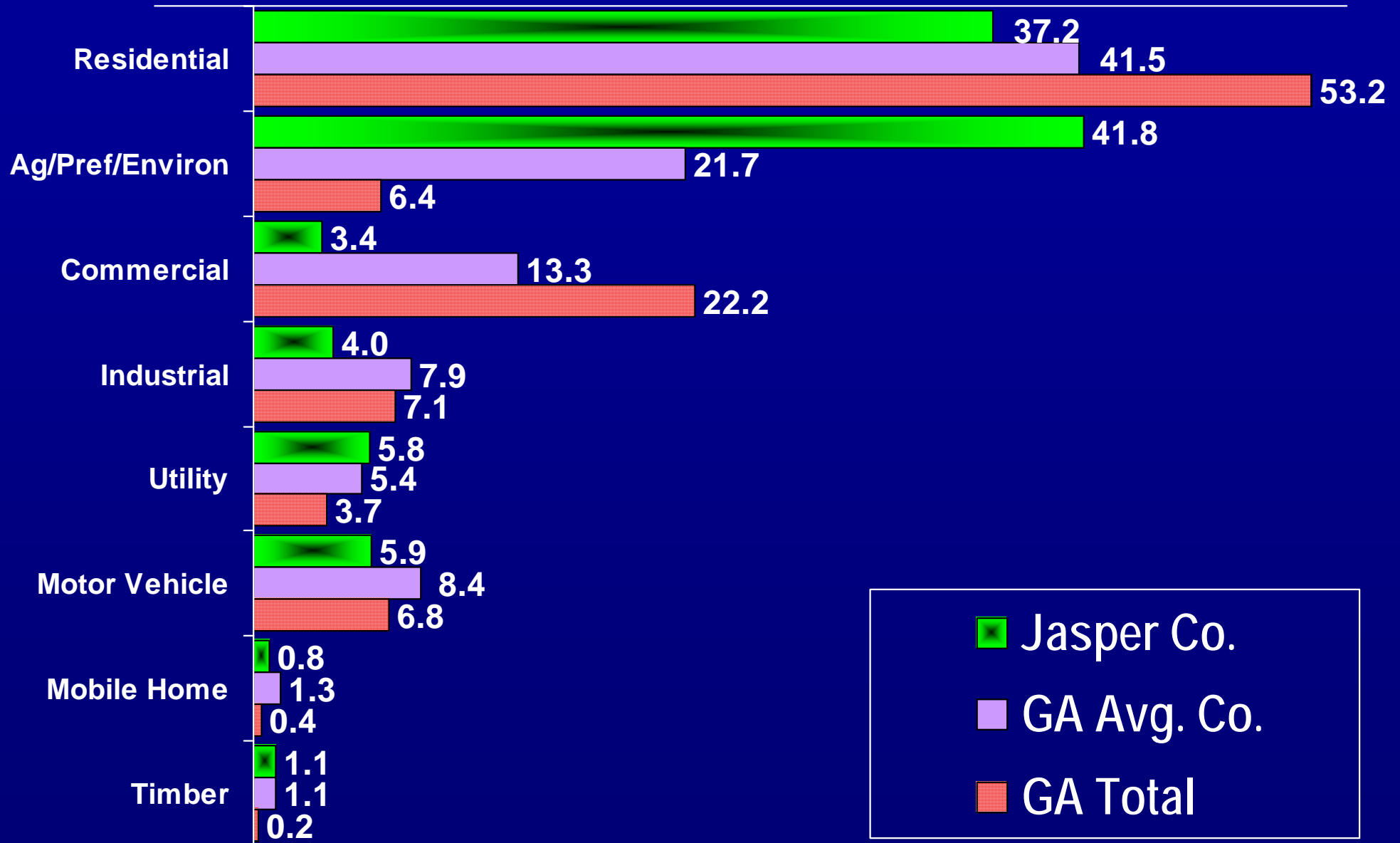
Farm Gate Value by Commodity Group: 2005

Jasper Co. Total Value = \$59,713,800



Components of Gross Property Tax Digest: 2005

Jasper Co. Gross Digest (40% Value) = \$564,652,144



Primary data source: GA Dept. of Revenue

County Property Tax Digest Comparisons: 2005

County	% Residential	% Agricultural	% Commercial	% Industrial	% Motor Vehicle	% Other
JASPER	37.2	41.8	3.4	4.0	5.9	7.6
BUTTS	45.9	26.9	10.8	2.9	8.4	5.1
JONES	54.4	13.6	9.1	2.1	11.0	9.2
MONROE	22.9	8.1	4.6	0.1	3.6	60.8
MORGAN	30.3	45.7	10.3	5.9	5.2	2.5
NEWTON	59.9	7.0	9.7	13.1	7.9	2.2
PUTNAM	63.2	11.3	8.1	3.0	4.9	9.6
Avg. GA Co.	41.5	21.7	13.3	7.9	8.4	7.8

Millage Rates, Taxes Levied, & Sales Tax

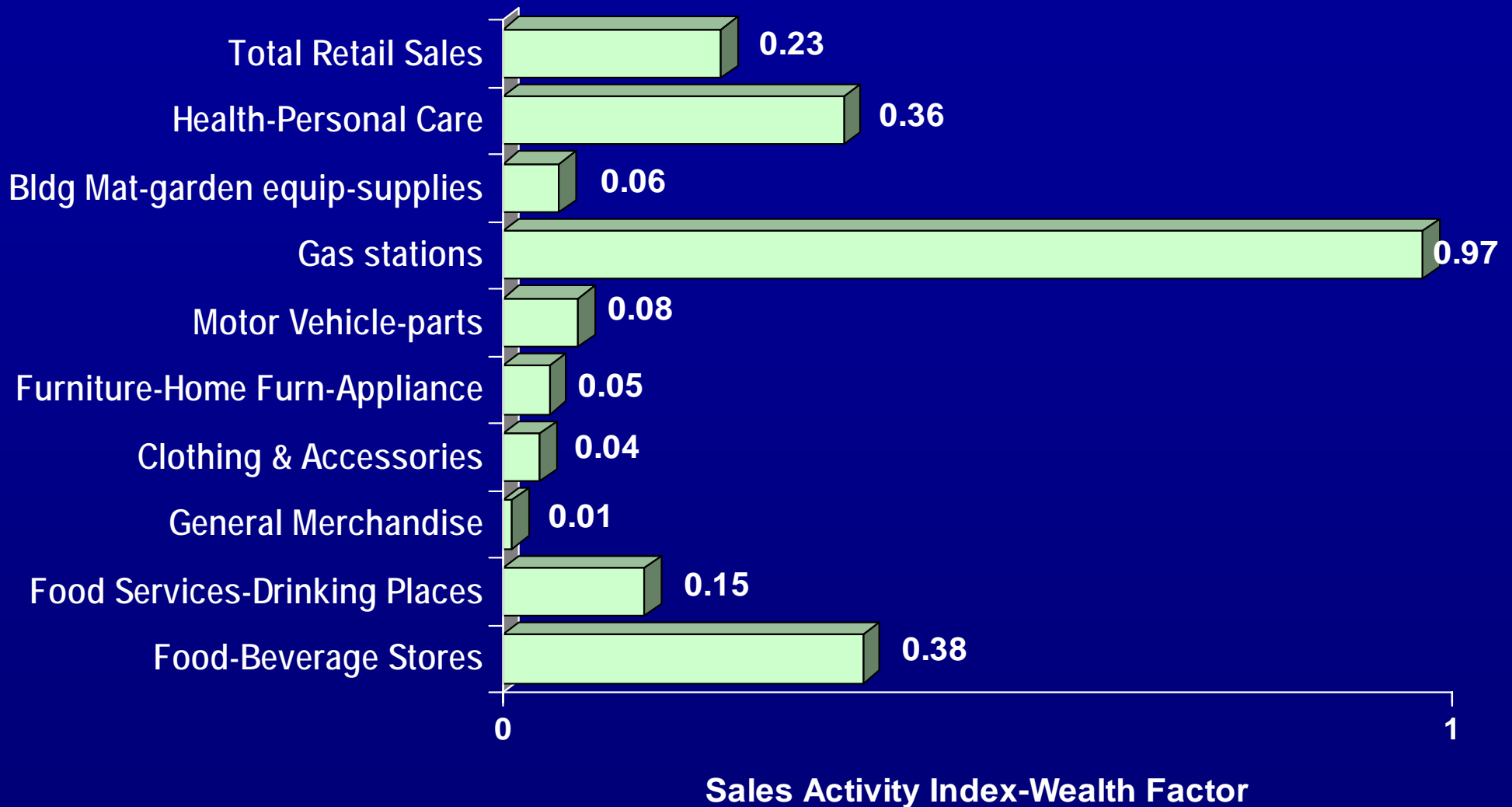
County	'05 County-wide Millage*	'05 School Millage*	'04 Taxes Levied* (\$000)	Sales Tax Rate as of 10/06	LOST Type* as of 10/06
JASPER	26.970	13.380	\$11,341	7	LSE
BUTTS	31.866	16.400	\$17,198	7	LSE
JONES	29.318	14.750	\$14,936	7	LSE
MONROE	24.700	13.500	\$34,998	7	LSE
MORGAN	26.700	16.000	\$17,374	7	LSE
NEWTON	31.449	18.210	\$71,261	7	LSE
PUTNAM	20.104	11.029	\$18,014	7	LSE

*All tax districts are assessed an additional .250 state millage. Taxes Levied, but not necessarily collected. L=Local Option Sales Tax, S=Special Purpose, E=Educational

Primary data source: GA Dept. of Revenue

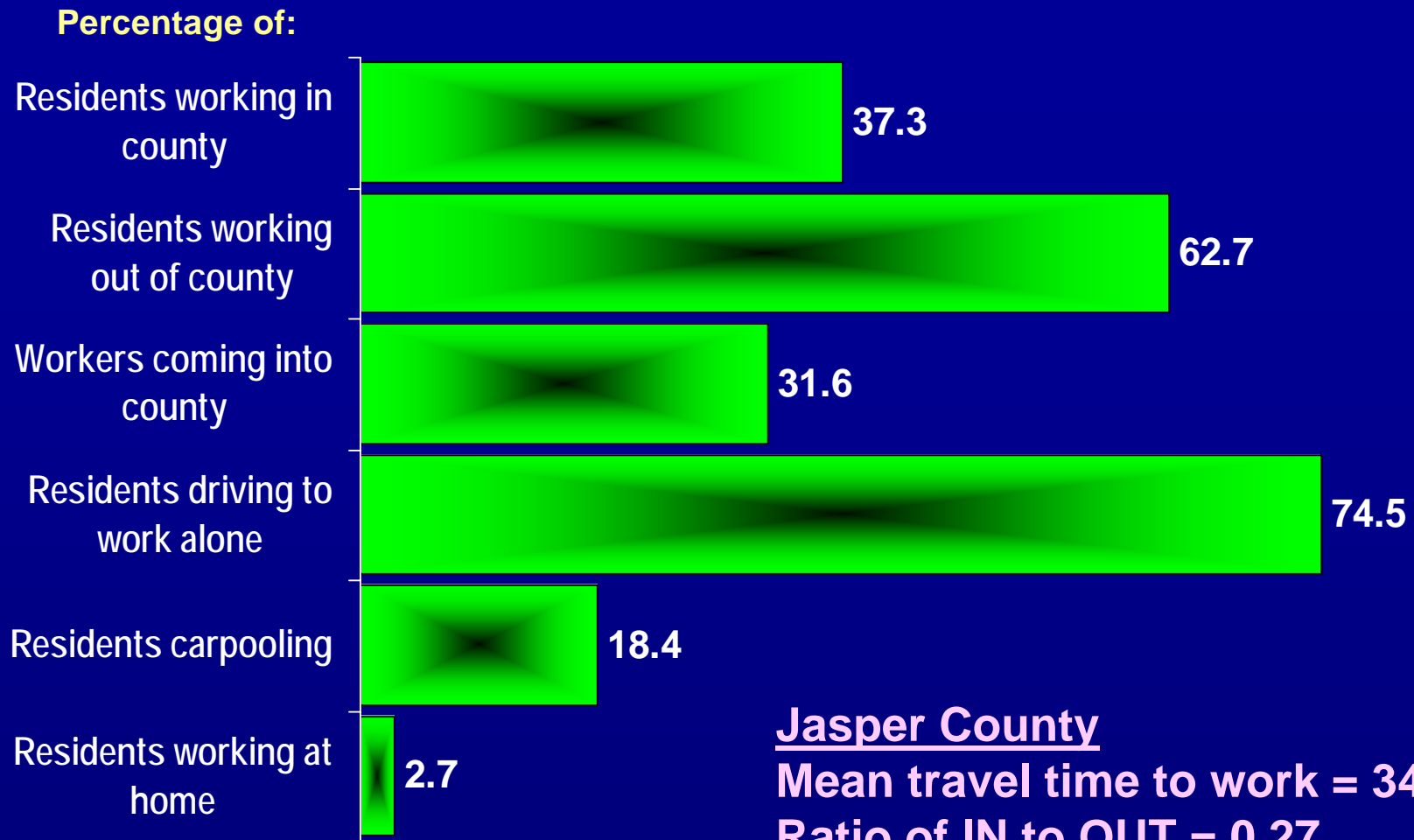
Retail Sales Analysis: 2005

Jasper Co. Total Retail Sales = \$41,222,000



A “pull factor” of 1.0 means that the county’s sales are what would be expected based upon the number of residents and their relative wealth.

Commuting to Work: 2000



Jasper County

Mean travel time to work = 34.2 min.

Ratio of IN to OUT = 0.27

Resident workers 16+ = 5123

Residents working in county = 1910

Residents working out of county = 3213

Total working in county = 2792

Workers commuting into county = 882

*This study was developed
to assist community leadership
with their future planning
and decision making.*

Special Area Report

0707

March, 2007



*Prepared for Jasper County Cooperative Extension
by Susan R. Boatright*

*Center for Agribusiness and Economic Development
College of Agricultural and Environmental Sciences
The University of Georgia • Athens, GA
Georgia Cooperative Extension*

706-542-0760 • 706-542-8938

www.caed.uga.edu AND www.georgiastats.uga.edu